



SMD Multilayer Ferrite Chip Beads-HGBY/HGBK Series

FEATURES

- * Product symbol: HSB, HGB, HPB, HUPB, HNB, HF, HVPB
- * Packaging: T: Tape and Reel; B: Bulk
- * Tolerance: Y = $\pm 25\%$; M = $\pm 20\%$; T: $\pm 30\%$
- * Note: RoHS Compliant



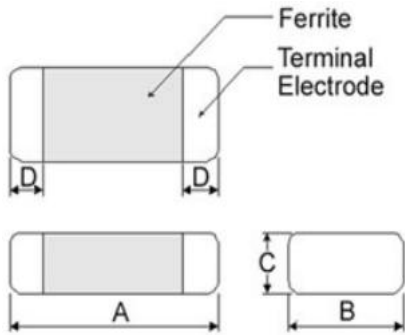
ORDERING CODE(标志示例)

HGBY □□□□ - □□□ □

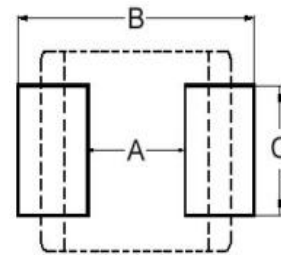
(1) (2) (3) (4)

- (1) HSBY 向华料号 Part Number
- (2) 尺寸 Dimensions
- (3) 电感量 Inductance
- (4) 电感量公差 Inductance Tolerance

Shape and Dimensions



Recommended Pattern



Dimensions in mm

TYPE	A	B	C	D
①060303	0.6 \pm 0.03	0.30 \pm 0.03	0.3 \pm 0.03	0.15 \pm 0.05
②100505	1.0 \pm 0.10	0.50 \pm 0.10	0.5 \pm 0.10	0.25 \pm 0.10
③160805	1.6 \pm 0.15	0.80 \pm 0.15	0.5 \pm 0.15	0.3 \pm 0.2
④160808	1.6 \pm 0.15	0.80 \pm 0.15	0.8 \pm 0.15	0.3 \pm 0.2
⑤201209	2.0 \pm 0.20	1.25 \pm 0.20	0.9 \pm 0.20	0.5 \pm 0.3
⑥321611	3.2 \pm 0.20	1.60 \pm 0.20	1.1 \pm 0.20	0.5 \pm 0.3

TYPE	A	B	C
①060303	0.2~0.3	0.75~1.05	0.30
②100505	0.40	1.2~1.4	0.50
③160805	0.7~0.8	1.8~2.0	0.6~0.8
④160808	0.7~0.8	1.8~2.0	0.6~0.8
⑤201209	1.0~1.2	2.6~4.0	1.0~1.2
⑥321611	2.00	4.2~5.2	1.20

Dimension Conversion

Code	Dimension in mm (A×B×C)	EIA
060303	0.6X0.3X0.3	0201
100505	1.0X0.5X0.5	0402
160805	1.6X0.8X0.5	0603
160808	1.6X0.8X0.8	0603
201209	2.0X1.2X0.9	0805
321611	3.2X1.6X1.1	1206



SMD Multilayer Ferrite Chip Beads-HGBK160808 Series

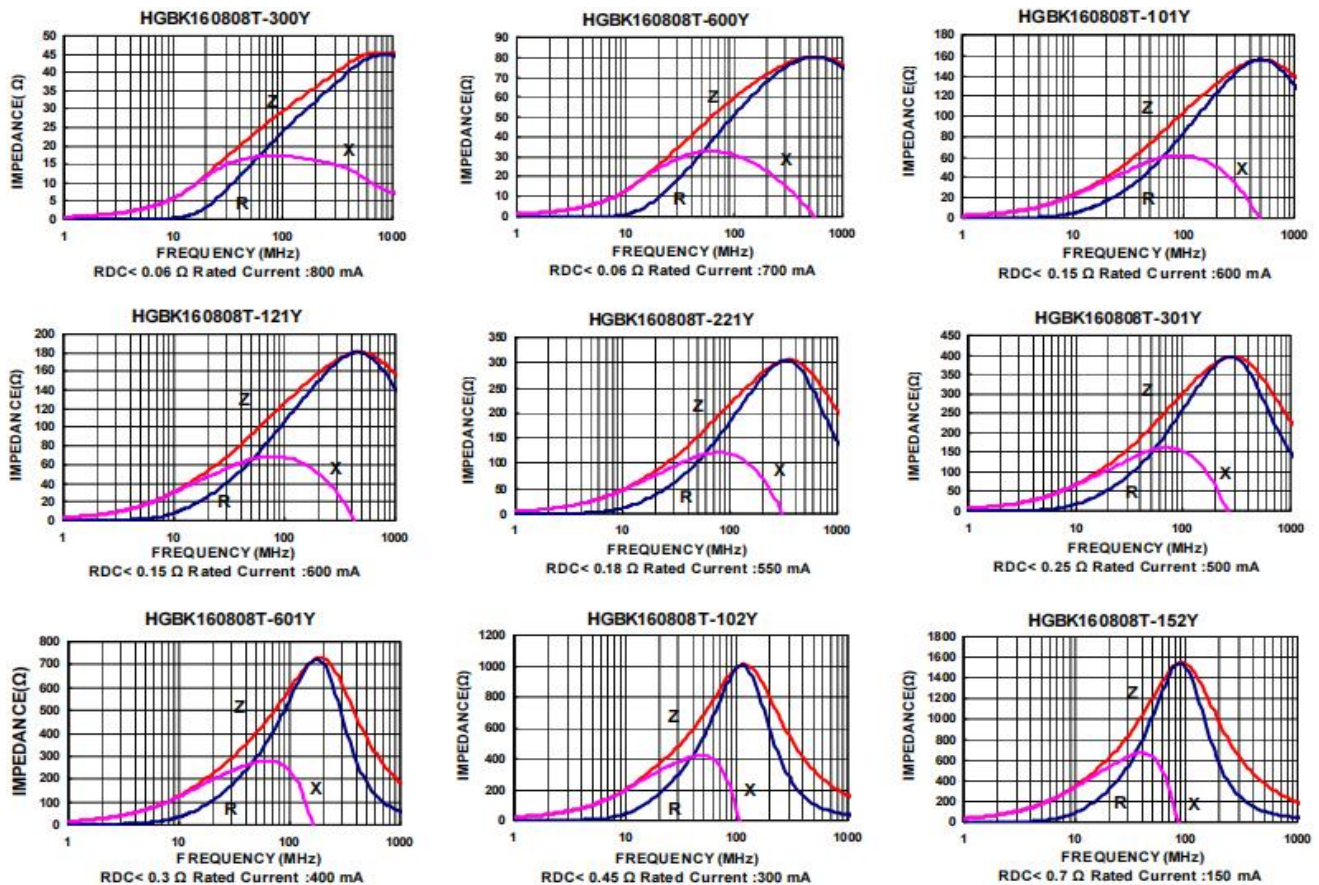
HGBK160808 series Electrical Characteristics

Part No.	Impedance (Ω)	Tolerance ($\pm\%$)	Test Freq. (MHz)	RDC (Ω)Max	Rated current (mA)Max
HGBK160808T-300Y	30	25	100	0.06	800
HGBK160808T-600Y	60	25	100	0.06	700
HGBK160808T-101Y	100	25	100	0.15	600
HGBK160808T-121Y	120	25	100	0.15	600
HGBK160808T-221Y	220	25	100	0.18	550
HGBK160808T-301Y	300	25	100	0.25	500
HGBK160808T-601Y	600	25	100	0.30	400
HGBK160808T-102Y	1000	25	100	0.45	300
HGBK160808T-152Y	1500	25	100	0.70	150

Note: When ordering, please specify tolerance code. Tolerance : Y= $\pm 25\%$

- Operating temperature range $-55^{\circ}\text{C} \sim 125^{\circ}\text{C}$ (Including self - temperature rise)
- Rate Current: Applied the current to coils, the temperature rise shall not be more than 30°C

Test Instruments: Agilent E4991A Impedance / Material Analyzer



Please be sure to request approval specifications that provide further details of the products. Kindly note that the content of these specifications are subject to change or may be discontinued without advance notice. Please contact our sales department before ordering.



SMD Multilayer Ferrite Chip Beads-HGBK201209 Series

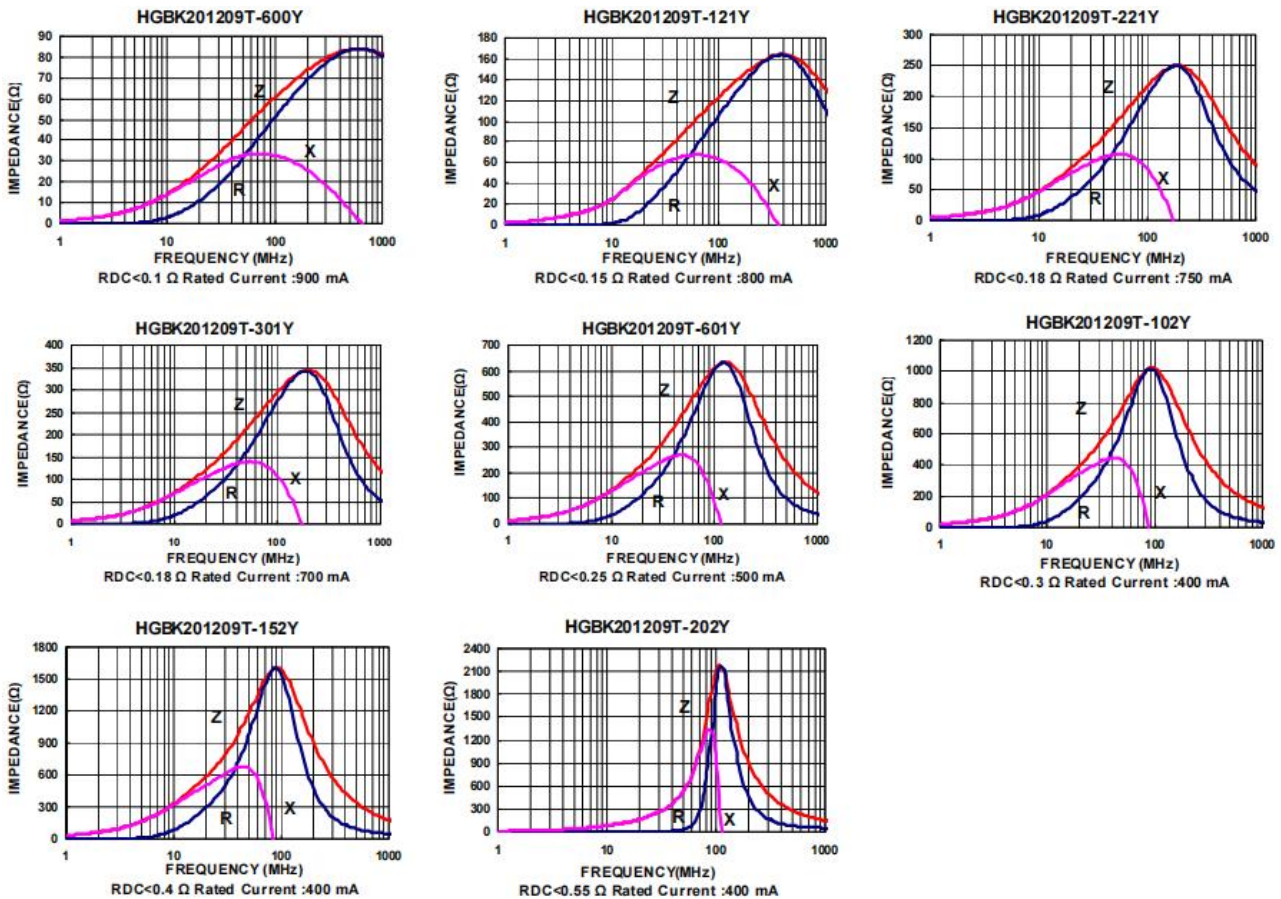
HGBK201209 series Electrical Characteristics

Part No.	Impedance (Ω)	Tolerance ($\pm\%$)	Test Freq. (MHz)	RDC (Ω)Max	Rated current (mA)Max
HGBK201209T-600Y	60	25	100	0.10	900
HGBK201209T-121Y	120	25	100	0.15	800
HGBK201209T-221Y	220	25	100	0.18	750
HGBK201209T-301Y	300	25	100	0.18	700
HGBK201209T-601Y	600	25	100	0.25	500
HGBK201209T-102Y	1000	25	100	0.30	400
HGBK201209T-152Y	1500	25	100	0.40	400
HGBK201209T-202Y	2000	25	100	0.55	400

Note: When ordering, please specify tolerance code. Tolerance : Y= $\pm 25\%$

- Operating temperature range $-55^{\circ}\text{C} \sim 125^{\circ}\text{C}$ (Including self - temperature rise)
- Rate Current: Applied the current to coils, the temperature rise shall not be more than 30°C

Test Instruments: Agilent E4991A Impedance / Material Analyzer



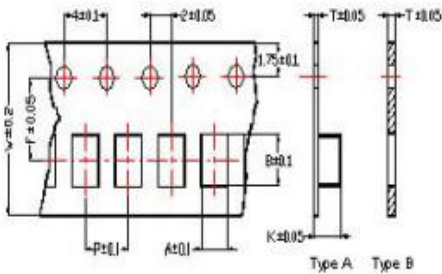
Please be sure to request approval specifications that provide further details of the products. Kindly note that the content of these specifications are subject to change or may be discontinued without advance notice. Please contact our sales department before ordering.



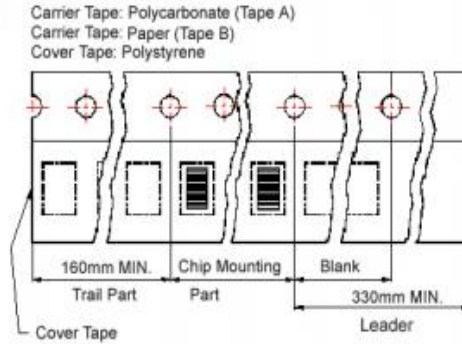
SMD Multilayer Ferrite Chip Beads-HGBY/HGBK Series

Packaging Specifications

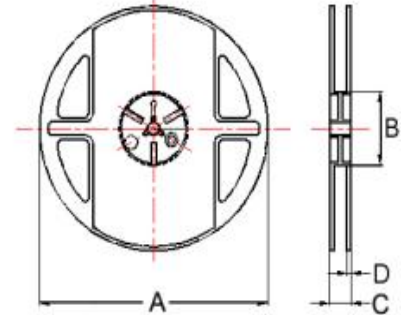
Tape Dimensions



Tape Material



Reel Dimensions



- ① : HSBY / HSBJ / HNB / HPB
- ② : HSBY / HSBJ / HNB / HPB / HUPB / HF
- ③ : HUPB
- ④ : HSBK / HSBJ / HGB / HPB / HNB / HUPB / HVPB
- ⑤ : HSBK / HGB / H PB / HUPB
- ⑥ : HSBY / HSBK / HPB / HUPB

Dimensions in mm

TYPE	Tape Dimensions								Reel Dimensions				Quantity PCS/REEL
	A	B	T	W	P	F	K	Tape	A	B	C	D	
①060303	0.37	0.67	0.42	8.0	2.0	3.5	--	B	178	60	10	2	15000
②100505	0.62	1.12	0.60	8.0	2.0	3.5	--	B	178	60	12	2	10000
③160805	1.05	1.85	0.60	8.0	2.0	3.5	--	B	178	60	12	2	10000
④160808	1.05	1.85	0.95	8.0	4.0	3.5	--	B	178	60	12	2	4000
⑤201209	1.50	2.30	0.97	8.0	4.0	3.5		B	178	60	12	2	4000
⑥321611	1.88	3.50	0.22	8.0	4.0	3.5	1.27	A	178	60	12	2	3000