



Molding Power Choke - HMCT Series

FEATURES

- * Magnetic metal powder inductor.
- * Compact design
- * High current, low DCR, high efficiency
- * Very low acoustic noise and very low leakage flux noise
- * High reliability
- * 100% Lead(Pb)-Free and RoHS compliant
- * AEC-Q200 qualified



ORDERING CODE(标志示例)

HMCT □□□□ - □□□ □

(1) (2) (3) (4)

- (1) HMCT 向华料号 Part Number
- (2) 尺寸 Dimensions
- (3) 电感量 Inductance
- (4) 电感量公差 Inductance Tolerance

Shape and Dimensions

Recommended Pattern

Fig1

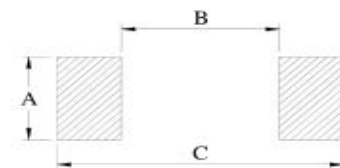
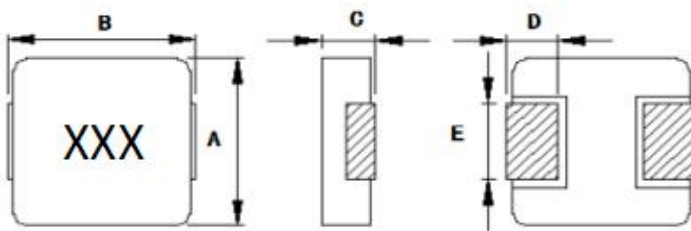
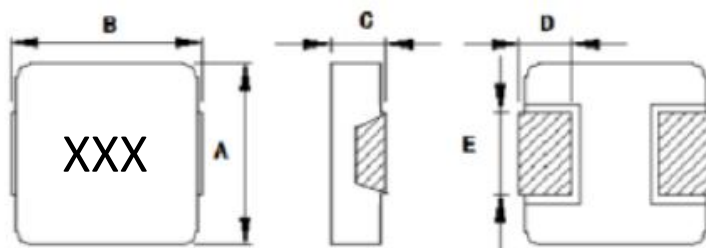


Fig2



Dimensions in mm

TYPE	A	B	C	D	E	A	B	C
HMCT0402	4.06±0.3	4.49±0.40	2.0max	1.1±0.3	1.5±0.3	2.30	2.20	5.20
HMCT0403	4.06±0.3	4.49±0.40	3.0max	1.1±0.3	1.5±0.3	2.30	2.20	5.20
HMCT0518	5.3max	5.6±0.3	1.8max	1.2±0.3	2.0±0.3	2.50	3.00	7.00



Molding Power Choke - HMCT Series

Dimensions in mm

TYPE	A	B	C	D	E	A	B	C
HMCT0502	5.3max	5.6±0.3	2.0max	1.2±0.3	2.0±0.3	2.50	3.00	7.00
HMCT0503	5.3max	5.6±0.3	3.0max	1.2±0.3	2.0±0.3	2.50	3.00	7.00
HMCT0618	6.6±0.3	7.6max	1.8max	1.6±0.5	3.0±0.3	3.50	2.50	8.40
HMCT0602	6.6±0.3	7.6max	2.0max	1.6±0.5	3.0±0.3	3.50	2.50	8.40
HMCT0624	6.6±0.3	7.6max	2.4max	1.6±0.5	3.0±0.3	3.50	2.50	8.40
HMCT0603	6.6±0.3	7.6max	3.0max	1.6±0.5	3.0±0.3	3.50	2.50	8.40
HMCT0604	6.6±0.3	7.6max	4.0max	1.6±0.5	3.0±0.3	3.50	2.50	8.40
HMCT0605	6.6±0.3	7.6max	5.0max	1.6±0.5	3.0±0.3	3.50	2.50	8.40
HMCT100705	10.1±0.5	7.0±0.5	5.0max	2.0±0.5	2.8±0.5	3.50	5.50	12.50
HMCT100608	11.0max	6.0max	8.0max	2.0±0.5	3.0±0.5	3.50	3.50	12.50
HMCT1004	10.5max	11.8max	4.0max	2.0±0.5	3.0±0.3	4.10	5.40	13.60
HMCT1005	10.5max	11.8max	5.0max	2.0±0.5	3.0±0.3	4.10	5.40	13.60
HMCT1235	12.8±0.5	13.5±1.0	3.5max	2.5±0.5	3.5±0.5	5.00	6.00	16.00
HMCT1205	12.8±0.5	13.5±1.0	5.0max	2.5±0.5	3.5±0.5	5.00	6.00	16.00
HMCT1265	12.8±0.5	13.5±1.0	6.5max	2.5±0.5	3.5±0.5	5.00	6.00	16.00
HMCT1707	17.0±0.5	18.0±1.0	7.0max	3.3±0.5	12.0±0.5	13.50	11.00	19.50



Molding Power Choke - HMCT0402 Series

HMCT0402 series Electrical Characteristics

Part No.	Inductance (uH)	Tolerance (±%)	Test Freq.	RDC(mΩ) Typ.(Max)	Isat (Amps)	Irms (Amps)	Shape	Shape
HMCT0402-R10T	0.1	30	100KHz,1V	3.8(4.5)	35.0	14.0	Fig1	R10
HMCT0402-R22M	0.22	20	100KHz,1V	5.0(7.0)	24.0	13.0	Fig1	R22
HMCT0402-R33M	0.33	20	100KHz,1V	8.2(10.5)	18.0	10.0	Fig1	R33
HMCT0402-R47M	0.47	20	100KHz,1V	11.0(14.0)	12.0	8.0	Fig1	R47
HMCT0402-R56M	0.56	20	100KHz,1V	14.0(18.0)	10.0	7.0	Fig1	R56
HMCT0402-R68M	0.68	20	100KHz,1V	15.0(20.0)	10.0	7.0	Fig1	R68
HMCT0402-1R0M	1.0	20	100KHz,1V	22.0(27.0)	8.5	5.0	Fig1	1R0
HMCT0402-1R5M	1.5	20	100KHz,1V	32.0(42.0)	7.0	4.5	Fig1	1R5
HMCT0402-2R2M	2.2	20	100KHz,1V	45.0(58.0)	7.0	4.0	Fig1	2R2
HMCT0402-3R3M	3.3	20	100KHz,1V	78.0(87.0)	6.0	3.0	Fig1	3R3
HMCT0402-4R7M	4.7	20	100KHz,1V	105(140)	4.0	2.2	Fig1	4R7
HMCT0402-6R8M	6.8	20	100KHz,1V	120(175)	3.0	2.1	Fig1	6R8
HMCT0402-8R2M	8.2	20	100KHz,1V	170(200)	2.5	1.8	Fig1	8R2
HMCT0402-100M	10	20	100KHz,1V	170(200)	2.5	1.6	Fig1	100
HMCT0402-220M	22	20	100KHz,1V	540(600)	2.0	1.0	Fig1	220

Note: When ordering, please specify tolerance code. Tolerance: M=±20% , T=±30%

- All test data is referenced to 25°C ambient
- Operating Temperature Range -55°C to +150°C
- I_{rms} : DC current (A) that will cause an approximate ΔT of 40°C
- I_{sat} : DC current (A) that will cause L_o to drop approximately 30%
- Test frequency: 100KHz, 1.0V



Molding Power Choke - HMCT0403 Series

HMCT0403 series Electrical Characteristics

Part No.	Inductance (μ H)	Tolerance (\pm %)	Test Freq.	RDC(m Ω) Typ.(Max)	Isat (Amps)	Irms (Amps)	Shape	Marking
HMCT0403-R47M	0.47	20	100KHz, 1V	6.9(7.6)	14.0	10.6	Fig1	R47
HMCT0403-1R0M	1.0	20	100KHz, 1V	19.0(21.0)	12.0	6.5	Fig1	1R0
HMCT0403-1R5M	1.5	20	100KHz, 1V	24.0(28.0)	8.0	5.0	Fig1	1R5
HMCT0403-2R2M	2.2	20	100KHz, 1V	29.0(36.0)	7.5	4.5	Fig1	2R2
HMCT0403-3R3M	3.3	20	100KHz, 1V	38.0(48.0)	6.0	3.7	Fig1	3R3
HMCT0403-4R7M	4.7	20	100KHz, 1V	44.0(52.0)	4.6	3.5	Fig1	4R7
HMCT0403-100M	10	20	100KHz, 1V	120(140)	3.5	2.5	Fig1	100
HMCT0403-150M	15	20	100KHz, 1V	225(280)	2.3	1.8	Fig1	150
HMCT0403-220M	22	20	100KHz, 1V	302(350)	2.0	1.5	Fig1	220

Note: When ordering, please specify tolerance code. Tolerance: M= \pm 20% , T= \pm 30%

- All test data is referenced to 25°C ambient
- Operating Temperature Range -55°C to +150°C
- Irms : DC current (A) that will cause an approximate Δ T of 40°C
- Isat : DC current (A) that will cause Lo to drop approximately 30%
- Test frequency: 100KHz, 1.0V



Molding Power Choke - HMCT0518 Series

HMCT0518 series Electrical Characteristics

Part No.	Inductance (uH)	Tolerance (±%)	Test Freq.	RDC(mΩ) Typ.(Max)	Isat (Amps)	Irms (Amps)	Shape	Marking
HMCT0518-R20T	0.2	30	100KHz,1V	3.6(4.1)	25.0	14.0	Fig1	R20
HMCT0518-R20M	0.2	20	100KHz,1V	3.6(4.1)	25.0	14.0	Fig1	R20
HMCT0518-R22M	0.22	20	100KHz,1V	4.2(5.0)	22.0	13.0	Fig1	R22
HMCT0518-R33M	0.33	20	100KHz,1V	7.5(8.6)	15.0	11.0	Fig1	R33
HMCT0518-R47M	0.47	20	100KHz,1V	9.8(11.3)	14.0	10.0	Fig1	R47
HMCT0518-R56M	0.56	20	100KHz,1V	11.0(13.0)	13.5	9.5	Fig1	R56
HMCT0518-R68M	0.68	20	100KHz,1V	12.4(14.3)	13.0	9.0	Fig1	R68
HMCT0518-1R0M	1.0	20	100KHz,1V	18.2(21.0)	10.0	6.8	Fig1	1R0
HMCT0518-1R5M	1.5	20	100KHz,1V	26.0(30.0)	9.0	6.0	Fig1	1R5
HMCT0518-2R2M	2.2	20	100KHz,1V	42.0(48.3)	7.5	4.5	Fig1	2R2
HMCT0518-3R3M	3.3	20	100KHz,1V	60.0(69.0)	5.0	3.5	Fig1	3R3
HMCT0518-4R7M	4.7	20	100KHz,1V	85.0(98.0)	4.5	3.0	Fig1	4R7
HMCT0518-5R6M	5.6	20	100KHz,1V	110(127)	4.0	2.5	Fig1	5R6
HMCT0518-6R8M	6.8	20	100KHz,1V	118(137)	3.5	2.4	Fig1	6R8
HMCT0518-8R2M	8.2	20	100KHz,1V	143(165)	3.0	2.3	Fig1	8R2
HMCT0518-100M	10	20	100KHz,1V	165(190)	2.8	2.3	Fig1	100
HMCT0518-150M	15	20	100KHz,1V	275(318)	2.3	1.7	Fig1	150

Note: When ordering, please specify tolerance code. Tolerance: M=±20% , T=±30%

- All test data is referenced to 25°C ambient
- Operating Temperature Range -55°C to +150°C
- Irms : DC current (A) that will cause an approximate ΔT of 40°C
- Isat : DC current (A) that will cause Lo to drop approximately 30%
- Test frequency: 100KHz, 1.0V

Please be sure to request approval specifications that provide further details of the products. Kindly note that the content of these specifications are subject to change or may be discontinued without advance notice. Please contact our sales department before ordering.



Molding Power Choke - HMCT0502 Series

HMCT0502 series Electrical Characteristics

Part No.	Inductance (μ H)	Tolerance (\pm %)	Test Freq.	RDC(m Ω) Typ.(Max)	Isat (Amps)	Irms (Amps)	Shape	Marking
HMCT0502-R10T	0.1	30	100KHz, 1V	3.6(4.0)	45.0	18.0	Fig1	R10
HMCT0502-R15T	0.15	30	100KHz, 1V	3.8(4.6)	27.0	16.0	Fig1	R15
HMCT0502-R22M	0.22	20	100KHz, 1V	4.0(5.5)	25.0	15.0	Fig1	R22
HMCT0502-R24M	0.24	20	100KHz, 1V	6.0(7.0)	23.0	13.0	Fig1	R24
HMCT0502-R33M	0.33	20	100KHz, 1V	6.3(7.3)	21.3	12.0	Fig1	R33
HMCT0502-R36M	0.36	20	100KHz, 1V	6.8(7.8)	20.0	11.8	Fig1	R36
HMCT0502-R47M	0.47	20	100KHz, 1V	8.4(9.5)	18.0	11.5	Fig1	R47
HMCT0502-R56M	0.56	20	100KHz, 1V	9.3(11.2)	15.0	10.7	Fig1	R56
HMCT0502-R68M	0.68	20	100KHz, 1V	11.0(12.4)	12.8	10.0	Fig1	R68
HMCT0502-1R0M	1.0	20	100KHz, 1V	17.5(20.0)	13.7	7.0	Fig1	1R0
HMCT0502-1R2M	1.2	20	100KHz, 1V	23.0(28.0)	11.0	6.2	Fig1	1R2
HMCT0502-1R5M	1.5	20	100KHz, 1V	26.5(30.5)	9.8	5.5	Fig1	1R5
HMCT0502-2R2M	2.2	20	100KHz, 1V	42.0(50.0)	9.0	4.2	Fig1	2R2
HMCT0502-3R3M	3.3	20	100KHz, 1V	66.0(76.0)	7.3	3.3	Fig1	3R3
HMCT0502-4R7M	4.7	20	100KHz, 1V	103(116)	5.0	2.8	Fig1	4R7
HMCT0502-5R6M	5.6	20	100KHz, 1V	112(122)	4.0	2.5	Fig1	5R6
HMCT0502-6R8M	6.8	20	100KHz, 1V	130(150)	3.8	2.4	Fig1	6R8
HMCT0502-8R2M	8.2	20	100KHz, 1V	148(171)	3.5	2.3	Fig1	8R2
HMCT0502-100M	10	20	100KHz, 1V	195(220)	4.0	2.3	Fig1	100

Note: When ordering, please specify tolerance code. Tolerance: M=±20% , T=±30%

- All test data is referenced to 25°C ambient
- Operating Temperature Range -55°C to +150°C
- Irms : DC current (A) that will cause an approximate Δ T of 40°C
- Isat : DC current (A) that will cause Lo to drop approximately 30%
- Test frequency: 100KHz, 1.0V

Please be sure to request approval specifications that provide further details of the products. Kindly note that the content of these specifications are subject to change or may be discontinued without advance notice. Please contact our sales department before ordering.



Molding Power Choke - HMCT0503 Series

HMCT0503 series Electrical Characteristics

Part No.	Inductance (uH)	Tolerance (±%)	Test Freq.	RDC(mΩ) Typ.(Max)	Isat (Amps)	Irms (Amps)	Shape	Marking
HMCT0503-R10T	0.1	30	100KHz,1V	2.5(3.0)	27.0	23.0	Fig1	R10
HMCT0503-R20T	0.2	30	100KHz,1V	2.6(3.2)	25.0	16.0	Fig1	R20
HMCT0503-R22M	0.22	20	100KHz,1V	3.7(4.4)	21.0	15.5	Fig1	R22
HMCT0503-R33M	0.33	20	100KHz,1V	4.3(5.0)	18.0	14.0	Fig1	R33
HMCT0503-R47M	0.47	20	100KHz,1V	6.4(7.4)	16.0	12.0	Fig1	R47
HMCT0503-R68M	0.68	20	100KHz,1V	10.0(12.0)	14.0	8.5	Fig1	R68
HMCT0503-1R0M	1.0	20	100KHz,1V	13.0(14.0)	11.0	7.0	Fig1	1R0
HMCT0503-1R2M	1.2	20	100KHz,1V	14.0(16.0)	11.0	6.5	Fig1	1R2
HMCT0503-1R5M	1.5	20	100KHz,1V	16.0(25.0)	10.0	6.0	Fig1	1R5
HMCT0503-2R2M	2.2	20	100KHz,1V	25.0(35.0)	9.0	5.5	Fig1	2R2
HMCT0503-3R3M	3.3	20	100KHz,1V	32.0(38.0)	8.0	5.0	Fig1	3R3
HMCT0503-3R6M	3.6	20	100KHz,1V	46.0(54.0)	7.0	4.9	Fig1	3R6
HMCT0503-4R7M	4.7	20	100KHz,1V	50.0(60.0)	6.0	4.6	Fig1	4R7
HMCT0503-5R6M	5.6	20	100KHz,1V	55.0(63.0)	4.5	4.3	Fig1	5R6
HMCT0503-6R8M	6.8	20	100KHz,1V	68.0(76.2)	4.3	4.0	Fig1	6R8
HMCT0503-100M	10	20	100KHz,1V	110(128)	4.0	2.8	Fig1	100
HMCT0503-150M	15	20	100KHz,1V	165(220)	3.0	2.1	Fig1	150
HMCT0503-180M	18	20	100KHz,1V	195(230)	2.3	2.0	Fig1	180
HMCT0503-220M	22	20	100KHz,1V	220(250)	1.7	1.9	Fig1	220
HMCT0503-330M	33	20	100KHz,1V	380(440)	1.6	1.6	Fig1	330

Note: When ordering, please specify tolerance code. Tolerance: M=±20% , T=±30%

- All test data is referenced to 25°C ambient
- Operating Temperature Range -55°C to +150°C
- Irms : DC current (A) that will cause an approximate ΔT of 40°C
- Isat : DC current (A) that will cause Lo to drop approximately 30%
- Test frequency: 100KHz, 1.0V

Please be sure to request approval specifications that provide further details of the products. Kindly note that the content of these specifications are subject to change or may be discontinued without advance notice. Please contact our sales department before ordering.



Molding Power Choke - HMCT0618 Series

HMCT0618 series Electrical Characteristics

Part No.	Inductance (uH)	Tolerance (±%)	Test Freq.	RDC(mΩ) Typ.(Max)	Isat (Amps)	Irms (Amps)	Shape	Marking
HMCT0618-R15T	0.15	30	100KHz,1V	2.2(2.6)	30.0	16.0	Fig1	R15
HMCT0618-R18T	0.18	30	100KHz,1V	2.5(3.0)	29.0	15.0	Fig1	R18
HMCT0618-R22M	0.22	20	100KHz,1V	2.5(3.0)	24.0	14.0	Fig1	R22
HMCT0618-R33M	0.33	20	100KHz,1V	4.8(5.8)	19.0	12.0	Fig1	R33
HMCT0618-R47M	0.47	20	100KHz,1V	6.4(7.4)	16.0	10.0	Fig1	R47
HMCT0618-R56M	0.56	20	100KHz,1V	8.5(10.0)	15.0	9.5	Fig1	R56
HMCT0618-R68M	0.68	20	100KHz,1V	9.5(11.0)	15.0	9.0	Fig1	R68
HMCT0618-R82M	0.82	20	100KHz,1V	11.5(14.0)	14.0	7.9	Fig1	R82
HMCT0618-1R0M	1.0	20	100KHz,1V	14.5(17.0)	12.0	6.5	Fig1	1R0
HMCT0618-1R2M	1.2	20	100KHz,1V	20.0(24.0)	11.0	6.0	Fig1	1R2
HMCT0618-1R5M	1.5	20	100KHz,1V	21.0(25.2)	11.0	5.5	Fig1	1R5
HMCT0618-2R2M	2.2	20	100KHz,1V	31.0(35.0)	10.0	5.5	Fig1	2R2
HMCT0618-3R3M	3.3	20	100KHz,1V	40.0(46.0)	8.0	4.5	Fig1	3R3
HMCT0618-4R7M	4.7	20	100KHz,1V	68.0(76.0)	6.0	3.6	Fig1	4R7
HMCT0618-5R6M	5.6	20	100KHz,1V	78.0(86.0)	5.0	3.1	Fig1	5R6
HMCT0618-6R8M	6.8	20	100KHz,1V	93.0(104)	4.5	2.6	Fig1	6R8
HMCT0618-8R2M	8.2	20	100KHz,1V	123(140)	3.8	2.2	Fig1	8R2
HMCT0618-100M	10	20	100KHz,1V	143(160)	3.1	2.0	Fig1	100
HMCT0618-150M	15	20	100KHz,1V	240(280)	2.7	1.7	Fig1	150
HMCT0618-220M	22	20	100KHz,1V	300(360)	2.1	1.5	Fig1	220

Note: When ordering, please specify tolerance code. Tolerance: M=±20% , T=±30%

- All test data is referenced to 25°C ambient
- Operating Temperature Range -55°C to +150°C
- Irms : DC current (A) that will cause an approximate ΔT of 40°C
- Isat : DC current (A) that will cause Lo to drop approximately 30%
- Test frequency: 100KHz, 1.0V

Please be sure to request approval specifications that provide further details of the products. Kindly note that the content of these specifications are subject to change or may be discontinued without advance notice. Please contact our sales department before ordering.



Molding Power Choke - HMCT0602 Series

HMCT0602 series Electrical Characteristics

Part No.	Inductance	Tolerance	Test Freq.	RDC(mΩ)	Isat	Irms	Shape	Shape
	(uH)	(±%)		Typ.(Max)	(Amps)	(Amps)		
HMCT0602-R10T	0.1	30	100KHz,1V	2.0(2.4)	40.0	21.0	Fig1	R10
HMCT0602-R15T	0.15	30	100KHz,1V	2.3(2.7)	39.0	18.0	Fig1	R15
HMCT0602-R16T	0.16	30	100KHz,1V	2.3(2.7)	38.0	18.0	Fig1	R16
HMCT0602-R18T	0.18	30	100KHz,1V	2.4(2.9)	36.0	18.0	Fig1	R18
HMCT0602-R20T	0.2	30	100KHz,1V	2.5(3.0)	35.0	18.0	Fig1	R20
HMCT0602-R22T	0.22	30	100KHz,1V	3.5(4.0)	32.0	15.0	Fig1	R22
HMCT0602-R33M	0.33	20	100KHz,1V	4.5(5.0)	25.0	14.0	Fig1	R33
HMCT0602-R47M	0.47	20	100KHz,1V	7.1(8.3)	20.0	11.7	Fig1	R47
HMCT0602-R56M	0.56	20	100KHz,1V	7.9(9.3)	18.0	11.0	Fig1	R56
HMCT0602-R68M	0.68	20	100KHz,1V	8.3(10.0)	16.0	10.5	Fig1	R68
HMCT0602-1R0M	1.0	20	100KHz,1V	16.5(20.0)	14.0	8.0	Fig1	1R0
HMCT0602-1R2M	1.2	20	100KHz,1V	19.0(23.0)	13.0	7.5	Fig1	1R2
HMCT0602-1R5M	1.5	20	100KHz,1V	23.0(27.0)	12.0	7.0	Fig1	1R5
HMCT0602-2R2M	2.2	20	100KHz,1V	32.0(37.0)	10.0	6.0	Fig1	2R2
HMCT0602-3R3M	3.3	20	100KHz,1V	43.0(48.0)	8.0	5.0	Fig1	3R3
HMCT0602-4R7M	4.7	20	100KHz,1V	58.0(65.0)	8.0	4.5	Fig1	4R7
HMCT0602-5R6M	5.6	20	100KHz,1V	59.0(68.0)	6.0	4.0	Fig1	5R6
HMCT0602-6R8M	6.8	20	100KHz,1V	63.0(73.0)	5.5	4.0	Fig1	6R8
HMCT0602-8R2M	8.2	20	100KHz,1V	101(116)	5.0	3.2	Fig1	8R2
HMCT0602-100M	10	20	100KHz,1V	134(154)	4.0	2.8	Fig1	100
HMCT0602-150M	15	20	100KHz,1V	190(210)	3.3	2.1	Fig1	150
HMCT0602-220M	22	20	100KHz,1V	236(280)	2.5	1.5	Fig1	220

Note: When ordering, please specify tolerance code. Tolerance: M=±20% , T=±30%

- All test data is referenced to 25°C ambient
- Operating Temperature Range -55°C to +150°C
- Irms : DC current (A) that will cause an approximate ΔT of 40°C
- Isat : DC current (A) that will cause Lo to drop approximately 30%
- Test frequency: 100KHz, 1.0V

Please be sure to request approval specifications that provide further details of the products. Kindly note that the content of these specifications are subject to change or may be discontinued without advance notice. Please contact our sales department before ordering.



Molding Power Choke - HMCT0624 Series

HMCT0624 series Electrical Characteristics

Part No.	Inductance	Tolerance	Test Freq.	RDC(mΩ)	Isat	Irms	Shape	Marking
	(uH)	(±%)		Typ.(Max)	(Amps)	(Amps)		
HMCT0624-R10T	0.1	30	100KHz,1V	1.4(1.7)	70.0	30.0	Fig1	R10
HMCT0624-R15T	0.15	30	100KHz,1V	1.8(2.3)	45.0	30.0	Fig1	R15
HMCT0624-R20M	0.2	20	100KHz,1V	1.9(2.8)	40.0	23.0	Fig1	R20
HMCT0624-R22M	0.22	20	100KHz,1V	2.0(3.2)	34.0	21.0	Fig1	R22
HMCT0624-R33M	0.33	20	100KHz,1V	3.6(4.4)	30.0	18.0	Fig1	R33
HMCT0624-R36M	0.36	20	100KHz,1V	3.8(4.6)	29.0	17.0	Fig1	R36
HMCT0624-R47M	0.47	20	100KHz,1V	4.8(5.1)	26.0	15.0	Fig1	R47
HMCT0624-R56M	0.56	20	100KHz,1V	5.5(6.5)	24.0	12.0	Fig1	R56
HMCT0624-R60M	0.6	20	100KHz,1V	5.7(6.9)	22.0	13.0	Fig1	R60
HMCT0624-R68M	0.68	20	100KHz,1V	6.4(7.2)	21.0	13.0	Fig1	R68
HMCT0624-R82M	0.82	20	100KHz,1V	8.0(9.5)	17.0	11.0	Fig1	R82
HMCT0624-1R0M	1.0	20	100KHz,1V	10.5(13.5)	16.0	11.0	Fig1	1R0
HMCT0624-1R5M	1.5	20	100KHz,1V	17.0(20.0)	12.0	7.0	Fig1	1R5
HMCT0624-2R2M	2.2	20	100KHz,1V	23.0(28.0)	11.0	6.0	Fig1	2R2
HMCT0624-3R3M	3.3	20	100KHz,1V	34.0(39.0)	10.0	6.0	Fig1	3R3
HMCT0624-4R7M	4.7	20	100KHz,1V	41.0(50.0)	9.0	5.5	Fig1	4R7
HMCT0624-5R6M	5.6	20	100KHz,1V	56.0(62.0)	8.0	5.0	Fig1	5R6
HMCT0624-6R8M	6.8	20	100KHz,1V	65.0(72.0)	7.0	4.0	Fig1	6R8
HMCT0624-8R2M	8.2	20	100KHz,1V	81.0(95.0)	6.0	3.6	Fig1	8R2
HMCT0624-100M	10	20	100KHz,1V	92.0(101.0)	5.0	3.2	Fig1	100
HMCT0624-150M	15	20	100KHz,1V	120.0(160.0)	3.5	2.5	Fig1	150
HMCT0624-220M	22	20	100KHz,1V	222.0(250.0)	3.0	1.8	Fig1	220

Note: When ordering, please specify tolerance code. Tolerance: M=±20% , T=±30%

- All test data is referenced to 25°C ambient
- Operating Temperature Range -55°C to +150°C
- Irms : DC current (A) that will cause an approximate ΔT of 40°C
- Isat : DC current (A) that will cause Lo to drop approximately 30%
- Test frequency: 100KHz, 1.0V

Please be sure to request approval specifications that provide further details of the products. Kindly note that the content of these specifications are subject to change or may be discontinued without advance notice. Please contact our sales department before ordering.



Molding Power Choke - HMCT0603 Series

HMCT0603 series Electrical Characteristics

Part No.	Inductance (μ H)	Tolerance (\pm %)	Test Freq.	RDC(m Ω) Typ.(Max)	Isat (Amps)	Irms (Amps)	Shape	Marking
HMCT0603-R10M	0.1	20	100KHz,1V	0.9(1.5)	60.0	32.5	Fig2	R10
HMCT0603-R15M	0.15	20	100KHz,1V	1.3(1.7)	52.0	30.0	Fig2	R15
HMCT0603-R20M	0.2	20	100KHz,1V	2.4(3.0)	41.0	24.0	Fig1	R20
HMCT0603-R22M	0.22	20	100KHz,1V	2.5(2.8)	40.0	23.0	Fig1	R22
HMCT0603-R33M	0.33	20	100KHz,1V	3.5(3.9)	30.0	20.0	Fig1	R33
HMCT0603-R47M	0.47	20	100KHz,1V	4.0(4.2)	26.0	17.5	Fig1	R47
HMCT0603-R56M	0.56	20	100KHz,1V	4.7(5.0)	25.5	16.5	Fig1	R56
HMCT0603-R68M	0.68	20	100KHz,1V	5.0(5.5)	25.0	15.5	Fig1	R68
HMCT0603-R75M	0.75	20	100KHz,1V	5.4(6.2)	24.5	14.0	Fig1	R75
HMCT0603-R82M	0.82	20	100KHz,1V	6.7(8.0)	24.0	13.0	Fig1	R82
HMCT0603-1R0M	1.0	20	100KHz,1V	9.0(10.0)	22.0	11.0	Fig1	1R0
HMCT0603-1R2M	1.2	20	100KHz,1V	10.0(12.0)	20.0	10.0	Fig1	1R2
HMCT0603-1R5M	1.5	20	100KHz,1V	14.0(15.0)	18.0	9.0	Fig1	1R5
HMCT0603-2R0M	2	20	100KHz,1V	16.0(18.0)	14.0	8.2	Fig1	2R0
HMCT0603-2R2M	2.2	20	100KHz,1V	18.0(20.0)	14.0	8.0	Fig1	2R2
HMCT0603-2R5M	2.5	20	100KHz,1V	20.0(22.0)	14.0	7.0	Fig1	2R5
HMCT0603-3R3M	3.3	20	100KHz,1V	28.0(30.0)	13.5	6.0	Fig1	3R3
HMCT0603-4R7M	4.7	20	100KHz,1V	37.0(40.0)	10.0	5.5	Fig1	4R7
HMCT0603-6R8M	6.8	20	100KHz,1V	54.0(60.0)	8.0	4.5	Fig1	6R8
HMCT0603-8R2M	8.2	20	100KHz,1V	60.0(68.0)	8.0	4.0	Fig1	8R2
HMCT0603-100M	10	20	100KHz,1V	95.0(105)	7.0	3.0	Fig1	100

Note: When ordering, please specify tolerance code. Tolerance: M=±20% , T=±30%

- All test data is referenced to 25°C ambient
- Operating Temperature Range -55°C to +150°C
- I_{rms} : DC current (A) that will cause an approximate ΔT of 40°C
- I_{sat} : DC current (A) that will cause L_o to drop approximately 30%
- Test frequency: 100KHz, 1.0V

Please be sure to request approval specifications that provide further details of the products. Kindly note that the content of these specifications are subject to change or may be discontinued without advance notice. Please contact our sales department before ordering.



Molding Power Choke - HMCT0604 Series

HMCT0604 series Electrical Characteristics

Part No.	Inductance (uH)	Tolerance (±%)	Test Freq.	RDC(mΩ) Typ.(Max)	Isat (Amps)	Irms (Amps)	Shape	Marking
HMCT0604-R12T	0.12	30	100KHz,1V	0.7(1.0)	64.0	32.0	Fig2	R12
HMCT0604-R15T	0.15	30	100KHz,1V	0.9(1.2)	55.0	30.0	Fig2	R15
HMCT0604-R22M	0.22	20	100KHz,1V	1.9(2.1)	34.0	25.0	Fig2	R22
HMCT0604-R33M	0.33	20	100KHz,1V	2.0(2.6)	34.0	25.0	Fig2	R33
HMCT0604-R36M	0.36	20	100KHz,1V	2.7(3.1)	31.0	25.0	Fig1	R36
HMCT0604-R47M	0.47	20	100KHz,1V	3.0(3.4)	28.0	23.0	Fig1	R47
HMCT0604-R56M	0.56	20	100KHz,1V	3.8(4.3)	26.0	20.0	Fig1	R56
HMCT0604-R68M	0.68	20	100KHz,1V	4.1(4.5)	24.0	16.0	Fig1	R68
HMCT0604-1R0M	1.0	20	100KHz,1V	6.8(8.0)	22.0	14.0	Fig1	1R0
HMCT0604-1R5M	1.5	20	100KHz,1V	10.0(12.0)	20.0	12.0	Fig1	1R5
HMCT0604-2R2M	2.2	20	100KHz,1V	11.5(14.0)	14.0	9.0	Fig1	2R2
HMCT0604-3R3M	3.3	20	100KHz,1V	24.0(27.0)	12.0	8.0	Fig1	3R3
HMCT0604-4R7M	4.7	20	100KHz,1V	28.0(32.5)	11.0	6.0	Fig1	4R7
HMCT0604-5R6M	5.6	20	100KHz,1V	33.0(38.0)	9.0	5.0	Fig1	5R6
HMCT0604-6R8M	6.8	20	100KHz,1V	44.0(50.0)	8.5	4.5	Fig1	6R8
HMCT0604-8R2M	8.2	20	100KHz,1V	55.0(64.0)	8.0	4.5	Fig1	8R2
HMCT0604-100M	10	20	100KHz,1V	64.0(72.0)	7.0	4.0	Fig1	100
HMCT0604-150M	15	20	100KHz,1V	80.0(90.0)	3.5	3.0	Fig1	150
HMCT0604-220M	22	20	100KHz,1V	120(145)	3.5	2.5	Fig1	220
HMCT0604-330M	33	20	100KHz,1V	180(210)	3.2	1.8	Fig1	330
HMCT0604-470M	47	20	100KHz,1V	295(350)	2.5	1.8	Fig1	470

Note: When ordering, please specify tolerance code. Tolerance: M=±20% , T=±30%

- All test data is referenced to 25°C ambient
- Operating Temperature Range -55°C to +150°C
- I_{rms} : DC current (A) that will cause an approximate ΔT of 40°C
- I_{sat} : DC current (A) that will cause L_o to drop approximately 30%
- Test frequency: 100KHz, 1.0V

Please be sure to request approval specifications that provide further details of the products. Kindly note that the content of these specifications are subject to change or may be discontinued without advance notice. Please contact our sales department before ordering.



Molding Power Choke - HMCT0605 Series

HMCT0605 series Electrical Characteristics

Part No.	Inductance	Tolerance	Test Freq.	RDC(mΩ)	Isat	Irms	Shape	Marking
	(uH)	(±%)		Typ.(Max)	(Amps)	(Amps)		
HMCT0605-R10T	0.10	30	100KHz,1V	0.7(0.8)	65.0	32.0	Fig2	R10
HMCT0605-R15T	0.15	30	100KHz,1V	1.3(1.7)	50.0	30.0	Fig2	R15
HMCT0605-R22M	0.22	20	100KHz,1V	1.6(1.9)	35.0	25.0	Fig2	R22
HMCT0605-R33M	0.33	20	100KHz,1V	2.5(3.0)	32.0	25.0	Fig2	R33
HMCT0605-R47M	0.47	20	100KHz,1V	3.5(3.9)	30.0	22.0	Fig1	R47
HMCT0605-R56M	0.56	20	100KHz,1V	3.6(4.2)	27.0	20.0	Fig1	R56
HMCT0605-R68M	0.68	20	100KHz,1V	4.0(4.5)	24.0	18.0	Fig1	R68
HMCT0605-R82M	0.82	20	100KHz,1V	4.6(4.9)	22.0	16.5	Fig1	R82
HMCT0605-1R0M	1.0	20	100KHz,1V	6.1(6.5)	20.0	15.0	Fig1	1R0
HMCT0605-1R2M	1.2	20	100KHz,1V	6.7(7.5)	18.0	14.0	Fig1	1R2
HMCT0605-1R5M	1.5	20	100KHz,1V	8.6(9.0)	16.5	12.0	Fig1	1R5
HMCT0605-1R8M	1.8	20	100KHz,1V	9.5(11.0)	15.0	12.0	Fig1	1R8
HMCT0605-2R2M	2.2	20	100KHz,1V	11.2(12.0)	14.0	10.0	Fig1	2R2
HMCT0605-3R3M	3.3	20	100KHz,1V	19.0(20.9)	12.0	8.0	Fig1	3R3
HMCT0605-4R7M	4.7	20	100KHz,1V	28.0(30.8)	10.0	6.5	Fig1	4R7
HMCT0605-4R9M	4.9	20	100KHz,1V	32.0(38.0)	9.5	6.3	Fig1	4R9
HMCT0605-5R6M	5.6	20	100KHz,1V	43.5(49.0)	9.0	6.0	Fig1	5R6
HMCT0605-6R8M	6.8	20	100KHz,1V	46.0(51.5)	8.5	5.5	Fig1	6R8
HMCT0605-8R2M	8.2	20	100KHz,1V	56.0(63.0)	8.0	5.0	Fig1	8R2
HMCT0605-100M	10	20	100KHz,1V	60.0(69.0)	7.5	4.0	Fig1	100
HMCT0605-120M	12	20	100KHz,1V	68.0(80.0)	6.7	3.8	Fig1	120
HMCT0605-150M	15	20	100KHz,1V	81.0(92.0)	6.0	3.5	Fig1	150
HMCT0605-220M	22	20	100KHz,1V	140(170)	5.5	2.5	Fig1	220
HMCT0605-330M	33	20	100KHz,1V	173(200)	3.5	2.0	Fig1	330
HMCT0605-420M	42	20	100KHz,1V	212(245)	2.8	2.0	Fig1	420
HMCT0605-470M	47	20	100KHz,1V	190(240)	2.7	1.9	Fig1	470
HMCT0605-560M	56	20	100KHz,1V	342(396)	2.1	1.6	Fig1	560
HMCT0605-680M	68	20	100KHz,1V	386(445)	2.0	1.2	Fig1	680

Note: When ordering, please specify tolerance code. Tolerance: M=±20% , T=±30%

- All test data is referenced to 25°C ambient
- Operating Temperature Range -55°C to +150°C
- I_{rms} : DC current (A) that will cause an approximate ΔT of 40°C
- I_{sat} : DC current (A) that will cause L_o to drop approximately 30%
- Test frequency: 100KHz, 1.0V

Please be sure to request approval specifications that provide further details of the products. Kindly note that the content of these specifications are subject to change or may be discontinued without advance notice. Please contact our sales department before ordering.



Molding Power Choke - HMCT100705 Series

HMCT100705 series Electrical Characteristics

Part No.	Inductance (uH)	Tolerance (±%)	Test Freq.	RDC(mΩ) Typ.(Max)	Isat (Amps)	Irms (Amps)	Shape	Marking
HMCT100705-R15M	0.15	20	100KHz, 1V	0.49(0.6)	90.0	42.0	Fig2	R15
HMCT100705-R22M	0.22	20	100KHz, 1V	0.53(0.6)	65.0	40.0	Fig2	R22
HMCT100705-R33M	0.33	20	100KHz, 1V	1.1(1.4)	60.0	28.0	Fig2	R33

Note: When ordering, please specify tolerance code. Tolerance: M=±20% , T=±30%

- All test data is referenced to 25°C ambient
- Operating Temperature Range -55°C to +150°C
- Irms : DC current (A) that will cause an approximate ΔT of 40°C
- Isat : DC current (A) that will cause Lo to drop approximately 30%
- Test frequency: 100KHz, 1.0V



Molding Power Choke - HMCT100608 Series

HMCT100608 series Electrical Characteristics

Part No.	Inductance (uH)	Tolerance (±%)	Test Freq.	RDC(mΩ) Typ.(Max)	Isat (Amps)	Irms (Amps)	Shape	Marking
HMCT100608-R10M	0.1	20	100KHz,1V	0.5(0.7)	100.0	70.0	Fig2	R10
HMCT100608-R12M	0.12	20	100KHz,1V	0.5(0.7)	90.0	70.0	Fig2	R12
HMCT100608-R15M	0.15	20	100KHz,1V	0.5(0.7)	80.0	70.0	Fig2	R15
HMCT100608-R18M	0.18	20	100KHz,1V	0.8(0.95)	77.0	68.0	Fig2	R18

Note: When ordering, please specify tolerance code. Tolerance: M=±20% , T=±30%

- All test data is referenced to 25°C ambient
- Operating Temperature Range -55°C to +150°C
- Irms : DC current (A) that will cause an approximate ΔT of 40°C
- Isat : DC current (A) that will cause Lo to drop approximately 30%
- Test frequency: 100KHz, 1.0V



Molding Power Choke - HMCT1004 Series

HMCT1004 series Electrical Characteristics

Part No.	Inductance	Tolerance	Test Freq.	RDC(mΩ)	Isat	Irms	Shape	Marking
	(uH)	(±%)		Typ.(Max)	(Amps)	(Amps)		
HMCT1004-R19M	0.19	20	100KHz,1V	0.5(0.7)	75.0	40.0	Fig2	R19
HMCT1004-R22M	0.22	20	100KHz,1V	0.5(0.7)	70.0	40.0	Fig2	R22
HMCT1004-R36M	0.36	20	100KHz,1V	1.1(1.3)	60.0	30.0	Fig2	R36
HMCT1004-R39M	0.39	20	100KHz,1V	1.2(1.4)	60.0	30.0	Fig2	R39
HMCT1004-R47M	0.47	20	100KHz,1V	1.2(1.5)	60.0	30.0	Fig2	R47
HMCT1004-R56M	0.56	20	100KHz,1V	1.6(1.8)	40.0	25.0	Fig2	R56
HMCT1004-1R0M	1.0	20	100KHz,1V	2.7(3.3)	36.0	18.0	Fig2	1R0
HMCT1004-1R5M	1.5	20	100KHz,1V	4.6(5.8)	33.0	16.0	Fig1	1R5
HMCT1004-2R2M	2.2	20	100KHz,1V	6.5(7.5)	27.0	12.0	Fig1	2R2
HMCT1004-3R3M	3.3	20	100KHz,1V	10.8(12.0)	20.0	11.0	Fig1	3R3
HMCT1004-4R7M	4.7	20	100KHz,1V	16.0(19.0)	17.0	9.5	Fig1	4R7
HMCT1004-6R8M	6.8	20	100KHz,1V	17.5(23.3)	13.5	8.5	Fig1	6R8
HMCT1004-100M	10	20	100KHz,1V	27.0(30.0)	12.0	7.5	Fig1	100
HMCT1004-150M	15	20	100KHz,1V	43.0(48.0)	10.0	6.3	Fig1	150
HMCT1004-220M	22	20	100KHz,1V	63.0(74.0)	7.0	5.0	Fig1	220
HMCT1004-330M	33	20	100KHz,1V	92.0(112)	5.0	3.5	Fig1	330
HMCT1004-470M	47	20	100KHz,1V	130(145)	4.5	3.0	Fig1	470
HMCT1004-680M	68	20	100KHz,1V	205(258)	4.0	2.5	Fig1	680

Note: When ordering, please specify tolerance code. Tolerance: M=±20% , T=±30%

- All test data is referenced to 25°C ambient
- Operating Temperature Range -55°C to +150°C
- Irms : DC current (A) that will cause an approximate ΔT of 40°C
- Isat : DC current (A) that will cause Lo to drop approximately 30%
- Test frequency: 100KHz, 1.0V

Please be sure to request approval specifications that provide further details of the products. Kindly note that the content of these specifications are subject to change or may be discontinued without advance notice. Please contact our sales department before ordering.



Molding Power Choke - HMCT1005 Series

HMCT1005 series Electrical Characteristics

Part No.	Inductance	Tolerance	Test Freq.	RDC(mΩ)	Isat	Irms	Shape	Marking
	(uH)	(±%)		Typ.(Max)	(Amps)	(Amps)		
HMCT1005-R22M	0.22	20	100KHz,1V	0.5(0.6)	70.0	45.0	Fig2	R22
HMCT1005-R30M	0.3	20	100KHz,1V	0.6(0.8)	65.0	38.0	Fig2	R30
HMCT1005-R56M	0.56	20	100KHz,1V	1.3(1.5)	43.0	26.5	Fig2	R56
HMCT1005-R90M	0.9	20	100KHz,1V	2.2(3.0)	32.0	25.0	Fig2	R90
HMCT1005-1R0M	1.0	20	100KHz,1V	2.8(3.5)	30.0	22.0	Fig2	1R0
HMCT1005-1R2M	1.2	20	100KHz,1V	2.9(3.5)	28.0	20.0	Fig2	1R2
HMCT1005-1R3M	1.3	20	100KHz,1V	3.2(3.7)	28.0	20.0	Fig2	1R3
HMCT1005-1R5M	1.5	20	100KHz,1V	3.5(4.1)	27.0	19.0	Fig2	1R5
HMCT1005-1R8M	1.8	20	100KHz,1V	3.7(4.7)	25.5	17.5	Fig2	1R8
HMCT1005-2R2M	2.2	20	100KHz,1V	5.4(6.0)	24.0	16.0	Fig1	2R2
HMCT1005-3R3M	3.3	20	100KHz,1V	9.0(10.4)	22.0	14.0	Fig1	3R3
HMCT1005-4R7M	4.7	20	100KHz,1V	10.0(12.5)	19.0	13.0	Fig1	4R7
HMCT1005-5R0M	5.0	20	100KHz,1V	12.2(15.0)	18.0	12.0	Fig1	5R0
HMCT1005-5R6M	5.6	20	100KHz,1V	14.0(16.8)	16.0	10.0	Fig1	5R6
HMCT1005-6R8M	6.8	20	100KHz,1V	16.5(21.0)	15.0	9.5	Fig1	6R8
HMCT1005-8R2M	8.2	20	100KHz,1V	18.5(24.0)	14.5	9.0	Fig1	8R2
HMCT1005-100M	10	20	100KHz,1V	25.0(29.0)	13.5	8.0	Fig1	100
HMCT1005-120M	12	20	100KHz,1V	30.0(35.0)	10.0	6.0	Fig1	120
HMCT1005-150M	15	20	100KHz,1V	37.0(45.0)	9.5	5.5	Fig1	150
HMCT1005-220M	22	20	100KHz,1V	50.0(60.0)	9.0	5.0	Fig1	220
HMCT1005-240M	24	20	100KHz,1V	59.0(70.8)	7.7	4.6	Fig1	240
HMCT1005-330M	33	20	100KHz,1V	93.0(100)	7.5	4.3	Fig1	330
HMCT1005-470M	47	20	100KHz,1V	125(145)	6.5	3.8	Fig1	470
HMCT1005-680M	68	20	100KHz,1V	195(215)	5.0	3.0	Fig1	680
HMCT1005-101M	100	20	100KHz,1V	315(380)	3.0	2.0	Fig1	101

Note: When ordering, please specify tolerance code. Tolerance: M=±20% , T=±30%

- All test data is referenced to 25°C ambient
- Operating Temperature Range -55°C to +150°C
- Irms : DC current (A) that will cause an approximate ΔT of 40°C
- Isat : DC current (A) that will cause Lo to drop approximately 30%
- Test frequency: 100KHz, 1.0V

Please be sure to request approval specifications that provide further details of the products. Kindly note that the content of these specifications are subject to change or may be discontinued without advance notice. Please contact our sales department before ordering.



Molding Power Choke - HMCT1235 Series

HMCT1235 series Electrical Characteristics

Part No.	Inductance (μ H)	Tolerance (\pm %)	Test Freq.	RDC(m Ω) Typ.(Max)	Isat (Amps)	Irms (Amps)	Shape	Marking
HMCT1235-1R5M	1.5	20	100KHz, 1V	4.8(5.5)	35.0	19.0	Fig1	1R5
HMCT1235-1R8M	1.8	20	100KHz, 1V	5.2(7.0)	30.0	17.0	Fig1	1R8
HMCT1235-2R2M	2.2	20	100KHz, 1V	6.3(8.0)	9.0	16.0	Fig1	2R2
HMCT1235-3R3M	3.3	20	100KHz, 1V	11.0(13.5)	27.0	12.0	Fig1	3R3
HMCT1235-4R7M	4.7	20	100KHz, 1V	15.3(18.5)	24.0	10.0	Fig1	4R7
HMCT1235-5R6M	5.6	20	100KHz, 1V	18.0(22.0)	19.0	9.5	Fig1	5R6
HMCT1235-6R8M	6.8	20	100KHz, 1V	20.0(24.0)	18.0	9.0	Fig1	6R8
HMCT1235-8R2M	8.2	20	100KHz, 1V	23.0(28.0)	16.0	8.5	Fig1	8R2
HMCT1235-100M	10	20	100KHz, 1V	29.0(34.0)	14.0	7.5	Fig1	100
HMCT1235-150M	15	20	100KHz, 1V	55.0(65.0)	10.0	6.5	Fig1	150
HMCT1235-220M	22	20	100KHz, 1V	83.0(99.0)	7.0	4.5	Fig1	220
HMCT1235-330M	33	20	100KHz, 1V	132(160)	6.0	3.5	Fig1	330
HMCT1235-470M	47	20	100KHz, 1V	181(218)	5.5	3.0	Fig1	470

Note: When ordering, please specify tolerance code. Tolerance: M= \pm 20% , T= \pm 30%

- All test data is referenced to 25°C ambient
- Operating Temperature Range -55°C to +150°C
- Irms : DC current (A) that will cause an approximate Δ T of 40°C
- Isat : DC current (A) that will cause Lo to drop approximately 30%
- Test frequency: 100KHz, 1.0V



Molding Power Choke - HMCT1205 Series

HMCT1205 series Electrical Characteristics

Part No.	Inductance (uH)	Tolerance (±%)	Test Freq.	RDC(mΩ) Typ.(Max)	Isat (Amps)	Irms (Amps)	Shape	Marking
HMCT1205-R15M	0.15	20	100KHz,1V	0.5(0.6)	110.0	53.0	Fig2	R15
HMCT1205-R22M	0.22	20	100KHz,1V	0.5(0.7)	110.0	52.0	Fig2	R22
HMCT1205-R33M	0.33	20	100KHz,1V	0.8(1.0)	75.0	42.0	Fig2	R33
HMCT1205-R36M	0.36	20	100KHz,1V	0.8(1.0)	70.0	42.0	Fig2	R36
HMCT1205-R40M	0.4	20	100KHz,1V	0.8(1.0)	65.0	41.0	Fig2	R40
HMCT1205-R47M	0.47	20	100KHz,1V	1.1(1.3)	60.0	38.0	Fig2	R47
HMCT1205-R56M	0.56	20	100KHz,1V	1.1(1.3)	55.0	36.0	Fig2	R56
HMCT1205-R68M	0.68	20	100KHz,1V	1.4(1.7)	54.0	34.0	Fig2	R68
HMCT1205-R82M	0.82	20	100KHz,1V	1.7(2.1)	52.0	31.0	Fig2	R82
HMCT1205-1R0M	1.0	20	100KHz,1V	1.8(2.5)	50.0	29.0	Fig2	1R0
HMCT1205-1R2M	1.2	20	100KHz,1V	1.9(2.4)	47.0	28.0	Fig2	1R2
HMCT1205-1R5M	1.5	20	100KHz,1V	2.7(4.1)	48.0	21.0	Fig2	1R5
HMCT1205-2R2M	2.2	20	100KHz,1V	4.5(5.5)	37.0	21.0	Fig2	2R2
HMCT1205-3R3M	3.3	20	100KHz,1V	7.1(8.4)	32.0	15.0	Fig1	3R3
HMCT1205-4R7M	4.7	20	100KHz,1V	11.4(15.0)	27.0	12.0	Fig1	4R7
HMCT1205-6R8M	6.8	20	100KHz,1V	14.5(18.5)	20.0	11.0	Fig1	6R8
HMCT1205-8R2M	8.2	20	100KHz,1V	19.8(22.5)	18.0	9.5	Fig1	8R2
HMCT1205-100M	10	20	100KHz,1V	22.0(25.5)	17.0	9.0	Fig1	100
HMCT1205-150M	15	20	100KHz,1V	32.0(38.0)	13.0	8.2.0	Fig1	150
HMCT1205-220M	22	20	100KHz,1V	50.0(58.0)	10.0	6.5	Fig1	220
HMCT1205-330M	33	20	100KHz,1V	55.0(65.0)	10.0	5.0	Fig1	330
HMCT1205-470M	47	20	100KHz,1V	85.0(100)	6.0	4.0	Fig1	470
HMCT1205-680M	68	20	100KHz,1V	154(180)	5.0	3.5	Fig1	680
HMCT1205-101M	100	20	100KHz,1V	165(200)	4.5	3.0	Fig1	101

Note: When ordering, please specify tolerance code. Tolerance: M=±20% , T=±30%

- All test data is referenced to 25°C ambient
- Operating Temperature Range -55°C to +150°C
- I_{rms} : DC current (A) that will cause an approximate ΔT of 40°C
- I_{sat} : DC current (A) that will cause L_o to drop approximately 30%
- Test frequency: 100KHz, 1.0V

Please be sure to request approval specifications that provide further details of the products. Kindly note that the content of these specifications are subject to change or may be discontinued without advance notice. Please contact our sales department before ordering.



Molding Power Choke - HMCT1265 Series

HMCT1265 series Electrical Characteristics

Part No.	Inductance	Tolerance	Test Freq.	RDC(mΩ)	Isat	Irms	Shape	Marking
	(uH)	(±%)		Typ.(Max)	(Amps)	(Amps)		
HMCT1265-R15M	0.15	20	100KHz, 1V	0.5(0.6)	118.0	55.0	Fig2	R15
HMCT1265-R22M	0.22	20	100KHz, 1V	0.5(0.6)	112.0	53.0	Fig2	R22
HMCT1265-R30M	0.3	20	100KHz, 1V	0.6(0.7)	72.0	48.0	Fig2	R30
HMCT1265-R33M	0.33	20	100KHz, 1V	0.7(0.8)	68.0	46.0	Fig2	R33
HMCT1265-R36M	0.36	20	100KHz, 1V	0.7(0.8)	66.0	45.0	Fig2	R36
HMCT1265-R40M	0.4	20	100KHz, 1V	0.8(1.0)	64.0	44.0	Fig2	R40
HMCT1265-R47M	0.47	20	100KHz, 1V	0.9(1.2)	63.0	41.0	Fig2	R47
HMCT1265-R50M	0.5	20	100KHz, 1V	0.9(1.3)	60.0	40.0	Fig2	R50
HMCT1265-R56M	0.56	20	100KHz, 1V	1.1(1.2)	58.0	37.0	Fig2	R56
HMCT1265-R68M	0.68	20	100KHz, 1V	1.3(1.5)	55.0	35.0	Fig2	R68
HMCT1265-R82M	0.82	20	100KHz, 1V	1.5(1.9)	50.0	33.0	Fig2	R82
HMCT1265-1R0M	1.0	20	100KHz, 1V	1.7(2.3)	48.0	30.0	Fig2	1R0
HMCT1265-1R2M	1.2	20	100KHz, 1V	1.9(2.4)	47.0	28.0	Fig2	1R2
HMCT1265-1R5M	1.5	20	100KHz, 1V	2.5(3.0)	45.0	27.0	Fig2	1R5
HMCT1265-1R8M	1.8	20	100KHz, 1V	3.6(4.0)	40.0	24.0	Fig2	1R8
HMCT1265-2R2M	2.2	20	100KHz, 1V	3.8(4.2)	37.0	22.0	Fig2	2R2
HMCT1265-2R7M	2.7	20	100KHz, 1V	4.3(5.5)	32.0	20.0	Fig2	2R7
HMCT1265-3R3M	3.3	20	100KHz, 1V	5.7(6.8)	30.0	18.0	Fig1	3R3
HMCT1265-4R7M	4.7	20	100KHz, 1V	7.0(8.4)	28.0	13.5	Fig1	4R7
HMCT1265-5R6M	5.6	20	100KHz, 1V	8.5(10.0)	23.0	12.5	Fig1	5R6
HMCT1265-6R8M	6.8	20	100KHz, 1V	9.5(11.5)	18.0	11.5	Fig1	6R8
HMCT1265-8R2M	8.2	20	100KHz, 1V	12.0(15.5)	16.0	10.5	Fig1	8R2
HMCT1265-100M	10	20	100KHz, 1V	13.2(16.5)	15.5	10.0	Fig1	100
HMCT1265-130M	13	20	100KHz, 1V	21.0(24.0)	13.0	9.0	Fig1	130
HMCT1265-150M	15	20	100KHz, 1V	23.2(28.0)	13.0	9.0	Fig1	150
HMCT1265-220M	22	20	100KHz, 1V	32.5(37.0)	12.0	9.0	Fig1	220
HMCT1265-330M	33	20	100KHz, 1V	48.0(58.0)	11.0	8.0	Fig1	330
HMCT1265-470M	47	20	100KHz, 1V	76.0(90.0)	9.5	6.5	Fig1	470
HMCT1265-680M	68	20	100KHz, 1V	110(130)	7.8	4.8	Fig1	680
HMCT1265-101M	100	20	100KHz, 1V	130(165)	5.5	4.2	Fig1	101

Note: When ordering, please specify tolerance code. Tolerance: M=±20% , T=±30%

- All test data is referenced to 25°C ambient
- Operating Temperature Range -55°C to +150°C
- Irms : DC current (A) that will cause an approximate ΔT of 40°C
- Isat : DC current (A) that will cause Lo to drop approximately 30%
- Test frequency: 100KHz, 1.0V

Please be sure to request approval specifications that provide further details of the products. Kindly note that the content of these specifications are subject to change or may be discontinued without advance notice. Please contact our sales department before ordering.



Molding Power Choke - HMCT1707 Series

HMCT1707 series Electrical Characteristics

Part No.	Inductance	Tolerance	Test Freq.	RDC(mΩ)	Isat	Irms	Shape	Marking
	(uH)	(±%)		Typ.(Max)	(Amps)	(Amps)		
HMCT1707-1R0M	1.0	20	100KHz,1V	1.3(1.5)	70.0	40.0	Fig1	1R0
HMCT1707-1R5M	1.5	20	100KHz,1V	1.8(2.5)	52.0	35.0	Fig1	1R5
HMCT1707-2R2M	2.2	20	100KHz,1V	2.0(3.0)	47.0	30.0	Fig1	2R2
HMCT1707-3R3M	3.3	20	100KHz,1V	2.8(3.5)	45.0	25.0	Fig1	3R3
HMCT1707-4R7M	4.7	20	100KHz,1V	4.2(5.0)	40.0	22.0	Fig1	4R7
HMCT1707-6R8M	6.8	20	100KHz,1V	6.5(7.5)	35.0	19.0	Fig1	6R8
HMCT1707-100M	10	20	100KHz,1V	9.0(13.0)	32.0	16.5	Fig1	100
HMCT1707-150M	15	20	100KHz,1V	14.5(18.0)	23.0	13.0	Fig1	150
HMCT1707-220M	22	20	100KHz,1V	20.5(25.0)	18.0	12.0	Fig1	220
HMCT1707-330M	33	20	100KHz,1V	30.0(42.0)	15.0	10.7	Fig1	330
HMCT1707-470M	47	20	100KHz,1V	41.0(52.0)	14.0	8.7	Fig1	470
HMCT1707-680M	68	20	100KHz,1V	50.0(85.0)	10.0	7.0	Fig1	680

Note: When ordering, please specify tolerance code. Tolerance: M=±20% , T=±30%

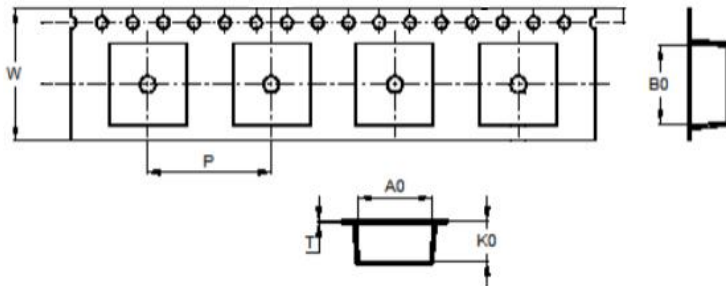
- All test data is referenced to 25°C ambient
- Operating Temperature Range -55°C to +150°C
- Irms : DC current (A) that will cause an approximate ΔT of 40°C
- Isat : DC current (A) that will cause Lo to drop approximately 30%
- Test frequency: 100KHz, 1.0V



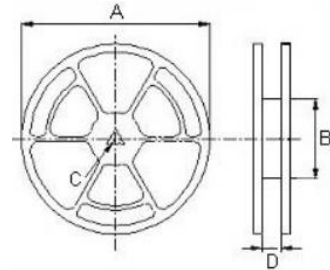
Molding Power Choke - HMCT Series

Packaging Specifications

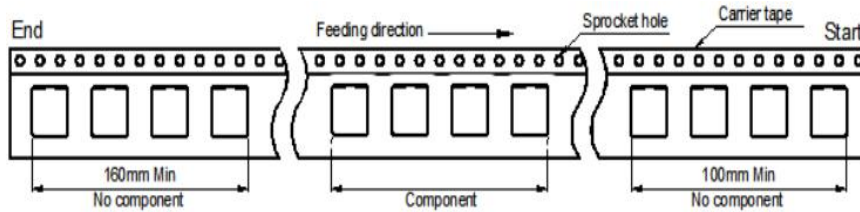
Tape Dimensions



Reel Dimensions



Tape Material



Dimensions in mm

TYPE	Tape Dimensions						Reel Dimensions				Quantity PCS/REEL
	A0	B0	K0	W	P	T	A	B	C	D	
HMCT0402	4.40	5.20	2.20	12	8.0	0.3	330	100	13	12	3000
HMCT0403	5.40	6.00	3.20	12	8.0	0.3	330	100	13	12	2500
HMCT0502	5.40	6.00	2.20	12	8.0	0.3	330	100	13	16	3000
HMCT0503	5.40	6.00	3.20	12	8.0	0.3	330	100	13	16	2500
HMCT0618	7.00	7.80	2.30	16	12.0	0.35	330	100	13	16	2000
HMCT0602	7.00	7.80	2.30	16	12.0	0.35	330	100	13	16	2000
HMCT0624	7.00	7.80	2.60	16	12.0	0.35	330	100	13	16	2000
HMCT0603	7.00	7.80	3.20	16	12.0	0.35	330	100	13	16	1500
HMCT0604	7.00	7.80	4.20	16	12.0	0.35	330	100	13	16	1000
HMCT0605	7.00	7.80	5.20	16	12.0	0.35	330	100	13	16	1000
HMCT100705	7.40	10.80	5.50	24	12.0	0.35	330	100	13	24	1000
HMCT100608	6.00	10.80	8.40	24	12.0	0.4	330	100	13	24	500
HMCT1004	10.70	12.00	4.50	24	16.0	0.35	330	100	13	24	1000
HMCT1005	10.70	12.00	5.20	24	16.0	0.35	330	100	13	24	800
HMCT1235	13.30	14.80	3.80	24	16.0	0.35	330	100	13	24	800
HMCT1205	13.30	14.80	5.30	24	16.0	0.35	330	100	13	24	500
HMCT1265	13.30	14.80	6.80	24	16.0	0.35	330	100	13	24	500
HMCT1707	17.40	18.80	7.60	32	24.0	0.35	330	100	13	33	300