



Leaded Power Inductor - HPKW Series

FEATURES

- * Switching Regulators
- * Power Amplifiers
- * SCR and Triac Networks
- * RFI Suppressions
- * Filters



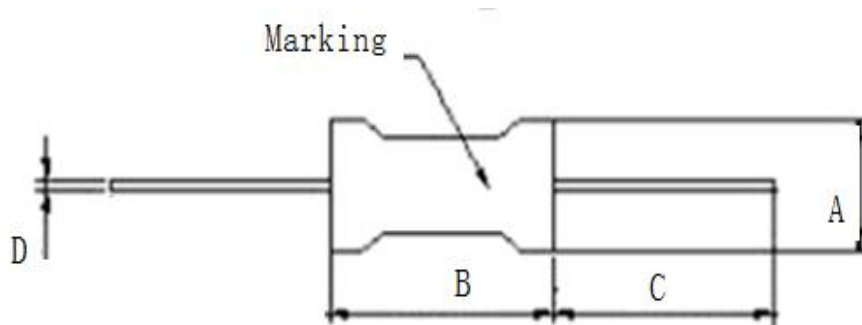
ORDERING CODE(标志示例)

HPKW □□□ - □□□ □

(1) (2) (3) (4)

- (1) HPKW 向华料号 Part Number
- (2) 尺寸 Dimensions
- (3) 电感量 Inductance
- (4) 电感量公差 Inductance Tolerance

Shape and Dimensions



Dimensions in mm

TYPE	A	B	C	D
HPKW0717	8.5 ⁺⁰	17.0 ⁺⁰	20 ⁻⁰	0.80
HPKW1126	12.5 ⁺⁰	26.5 ⁺⁰	20 ⁻⁰	0.80
HPKW1223	13.5 ⁺⁰	23.5 ⁺⁰	20 ⁻⁰	0.80



Lead Power Inductor - HPKW0717 Series

HPKW0717 series Electrical Characteristics

Part No.	Inductance (μ H)	Tolerance (\pm %)	Test Freq. (KHz)	RDC (Ω)Max	Isat (mA) Max
HPKW0717-3R9□	3.9	10,20	1KHz,1V	0.019	3600
HPKW0717-4R7□	4.7	10,20	1KHz,1V	0.022	2800
HPKW0717-5R6□	5.6	10,20	1KHz,1V	0.024	2600
HPKW0717-6R8□	6.8	10,20	1KHz,1V	0.026	2200
HPKW0717-8R2□	8.2	10,20	1KHz,1V	0.028	2100
HPKW0717-100□	10	10,20	1KHz,1V	0.033	1700
HPKW0717-120□	12	10,20	1KHz,1V	0.037	1700
HPKW0717-150□	15	10,20	1KHz,1V	0.040	1400
HPKW0717-180□	18	10,20	1KHz,1V	0.044	1300
HPKW0717-220□	22	10,20	1KHz,1V	0.050	1200
HPKW0717-270□	27	10,20	1KHz,1V	0.058	1100
HPKW0717-330□	33	10,20	1KHz,1V	0.075	950
HPKW0717-390□	39	10,20	1KHz,1V	0.094	900
HPKW0717-470□	47	10,20	1KHz,1V	0.109	830
HPKW0717-560□	56	10,20	1KHz,1V	0.140	750
HPKW0717-680□	68	10,20	1KHz,1V	0.131	700
HPKW0717-820□	82	10,20	1KHz,1V	0.152	600
HPKW0717-101□	100	10,20	1KHz,1V	0.208	550
HPKW0717-121□	120	10,20	1KHz,1V	0.283	500
HPKW0717-151□	150	10,20	1KHz,1V	0.340	450
HPKW0717-181□	180	10,20	1KHz,1V	0.362	450
HPKW0717-221□	220	10,20	1KHz,1V	0.430	350
HPKW0717-271□	270	10,20	1KHz,1V	0.557	300
HPKW0717-331□	330	10,20	1KHz,1V	0.665	300
HPKW0717-391□	390	10,20	1KHz,1V	0.772	250
HPKW0717-471□	470	10,20	1KHz,1V	1.150	250
HPKW0717-561□	560	10,20	1KHz,1V	1.270	250
HPKW0717-681□	680	10,20	1KHz,1V	1.610	200
HPKW0717-821□	820	10,20	1KHz,1V	1.960	200
HPKW0717-102□	1000	10,20	1KHz,1V	2.300	180
HPKW0717-122□	1200	10,20	1KHz,1V	2.650	170
HPKW0717-152□	1500	10,20	1KHz,1V	3.400	140
HPKW0717-182□	1800	10,20	1KHz,1V	4.030	130
HPKW0717-222□	2200	10,20	1KHz,1V	4.380	120
HPKW0717-272□	2700	10,20	1KHz,1V	5.400	100
HPKW0717-332□	3300	10,20	1KHz,1V	6.560	95

Note: When ordering, please specify tolerance code. Tolerance: K=±10% M=±20%

- Operating temperature range $-40^{\circ}\text{C} \sim 125^{\circ}\text{C}$ (Including self - temperature rise)
- Isat for Inductance drop 10% from its value without current.
- "-N" FOR COMPLETELY LEAD FREE TYPE (INCLUDING FERRITE BODY & SOLDER)

Please be sure to request approval specifications that provide further details of the products. Kindly note that the content of these specifications are subject to change or may be discontinued without advance notice. Please contact our sales department before ordering.



Lead Power Inductor - HPKW0717 Series

HPKW0717 series Electrical Characteristics

Part No.	Inductance (μ H)	Tolerance (\pm %)	Test Freq. (KHz)	RDC (Ω)Max	Isat (mA) Max
HPKW0717-392□	3900	10,20	1KHz,1V	8.630	90
HPKW0717-472□	4700	10,20	1KHz,1V	9.660	80
HPKW0717-562□	5600	10,20	1KHz,1V	13.900	70
HPKW0717-682□	6800	10,20	1KHz,1V	16.300	60
HPKW0717-822□	8200	10,20	1KHz,1V	20.800	60
HPKW0717-103□	10000	10,20	1KHz,1V	26.400	55
HPKW0717-123□	12000	10,20	1KHz,1V	29.900	45
HPKW0717-153□	15000	10,20	1KHz,1V	42.500	45
HPKW0717-183□	18000	10,20	1KHz,1V	48.300	40

Note: When ordering, please specify tolerance code. Tolerance: K= \pm 10% M= \pm 20%

- Operating temperature range $-40^{\circ}\text{C} \sim 125^{\circ}\text{C}$ (Including self - temperature rise)
- Isat for Inductance drop 10% from its value without current.
- "-N" FOR COMPLETELY LEAD FREE TYPE (INCLUDING FERRITE BODY & SOLDER)



Lead Power Inductor - HPKW1126 Series

HPKW1126 series Electrical Characteristics

Part No.	Inductance (μ H)	Tolerance (\pm %)	Test Freq. (KHz)	RDC (Ω)Max	Isat (mA) Max
HPKW1126-100□	10	10,20	1KHz,1V	0.023	4200
HPKW1126-120□	12	10,20	1KHz,1V	0.025	3600
HPKW1126-150□	15	10,20	1KHz,1V	0.030	3400
HPKW1126-180□	18	10,20	1KHz,1V	0.032	3100
HPKW1126-220□	22	10,20	1KHz,1V	0.035	2700
HPKW1126-270□	27	10,20	1KHz,1V	0.038	2400
HPKW1126-330□	33	10,20	1KHz,1V	0.043	2200
HPKW1126-390□	39	10,20	1KHz,1V	0.047	1800
HPKW1126-470□	47	10,20	1KHz,1V	0.054	1800
HPKW1126-560□	56	10,20	1KHz,1V	0.060	1500
HPKW1126-680□	68	10,20	1KHz,1V	0.068	1500
HPKW1126-820□	82	10,20	1KHz,1V	0.073	1300
HPKW1126-101□	100	10,20	1KHz,1V	0.098	1200
HPKW1126-121□	120	10,20	1KHz,1V	0.140	1100
HPKW1126-151□	150	10,20	1KHz,1V	0.180	1000
HPKW1126-181□	180	10,20	1KHz,1V	0.200	940
HPKW1126-221□	220	10,20	1KHz,1V	0.280	800
HPKW1126-271□	270	10,20	1KHz,1V	0.310	800
HPKW1126-331□	330	10,20	1KHz,1V	0.350	600
HPKW1126-391□	390	10,20	1KHz,1V	0.380	600
HPKW1126-471□	470	10,20	1KHz,1V	0.440	500
HPKW1126-561□	560	10,20	1KHz,1V	0.480	500
HPKW1126-681□	680	10,20	1KHz,1V	0.630	450
HPKW1126-821□	820	10,20	1KHz,1V	0.870	450
HPKW1126-102□	1000	10,20	1KHz,1V	0.960	400
HPKW1126-122□	1200	10,20	1KHz,1V	1.300	390
HPKW1126-152□	1500	10,20	1KHz,1V	1.400	300
HPKW1126-182□	1800	10,20	1KHz,1V	1.700	300
HPKW1126-222□	2200	10,20	1KHz,1V	2.300	260
HPKW1126-272□	2700	10,20	1KHz,1V	2.600	250
HPKW1126-332□	3300	10,20	1KHz,1V	3.500	200
HPKW1126-392□	3900	10,20	1KHz,1V	3.800	200
HPKW1126-472□	4700	10,20	1KHz,1V	4.300	180
HPKW1126-562□	5600	10,20	1KHz,1V	5.600	170
HPKW1126-682□	6800	10,20	1KHz,1V	6.300	140
HPKW1126-822□	8200	10,20	1KHz,1V	8.600	140

Note: When ordering, please specify tolerance code. Tolerance: K= \pm 10% M= \pm 20%

- Operating temperature range $-40^{\circ}\text{C} \sim 125^{\circ}\text{C}$ (Including self - temperature rise)
- Isat for Inductance drop 10% from its value without current.
- "-N" FOR COMPLETELY LEAD FREE TYPE (INCLUDING FERRITE BODY & SOLDER)

Please be sure to request approval specifications that provide further details of the products. Kindly note that the content of these specifications are subject to change or may be discontinued without advance notice. Please contact our sales department before ordering.



Lead Power Inductor - HPKW1126 Series

HPKW1126 series Electrical Characteristics

Part No.	Inductance (μ H)	Tolerance (\pm %)	Test Freq. (KHz)	RDC (Ω)Max	Isat (mA) Max
HPKW1126-103□	10000	10,20	1KHz,1V	9.700	120
HPKW1126-123□	12000	10,20	1KHz,1V	11.000	110
HPKW1126-153□	15000	10,20	1KHz,1V	15.000	100
HPKW1126-183□	18000	10,20	1KHz,1V	20.000	95
HPKW1126-223□	22000	10,20	1KHz,1V	24.000	85
HPKW1126-273□	27000	10,20	1KHz,1V	26.000	80
HPKW1126-333□	33000	10,20	1KHz,1V	35.000	70
HPKW1126-393□	39000	10,20	1KHz,1V	38.000	65
HPKW1126-473□	47000	10,20	1KHz,1V	50.000	60
HPKW1126-563□	56000	10,20	1KHz,1V	55.000	55
HPKW1126-683□	68000	10,20	1KHz,1V	76.000	50
HPKW1126-823□	82000	10,20	1KHz,1V	86.000	45
HPKW1126-104□	100000	10,20	1KHz,1V	99.000	40
HPKW1126-124□	120000	10,20	1KHz,1V	110.000	40
HPKW1126-154□	150000	10,20	1KHz,1V	200.000	35
HPKW1126-184□	180000	10,20	1KHz,1V	220.000	30
HPKW1126-224□	220000	10,20	1KHz,1V	300.000	25
HPKW1126-274□	270000	10,20	1KHz,1V	320.000	25
HPKW1126-334□	330000	10,20	1KHz,1V	420.000	25
HPKW1126-394□	390000	10,20	1KHz,1V	480.000	20
HPKW1126-474□	470000	10,20	1KHz,1V	670.000	20
HPKW1126-564□	560000	10,20	1KHz,1V	730.000	20
HPKW1126-684□	680000	10,20	1KHz,1V	870.000	15
HPKW1126-824□	820000	10,20	1KHz,1V	950.000	15
HPKW1126-105□	1000000	10,20	1KHz,1V	1100.000	15

Note: When ordering, please specify tolerance code. Tolerance: K= \pm 10% M= \pm 20%

- Operating temperature range $-40^{\circ}\text{C} \sim 125^{\circ}\text{C}$ (Including self - temperature rise)
- Isat for Inductance drop 10% from its value without current.
- "-N" FOR COMPLETELY LEAD FREE TYPE (INCLUDING FERRITE BODY & SOLDER)



Lead Power Inductor - HPKW1223 Series

HPKW1223 series Electrical Characteristics

Part No.	Inductance (μ H)	Tolerance (\pm %)	Test Freq. (KHz)	RDC (Ω)Max	Isat (mA) Max
HPKW1223-3R9□	3.9	10,20	1KHz,1V	0.007	4500
HPKW1223-4R7□	4.7	10,20	1KHz,1V	0.008	4000
HPKW1223-5R6□	5.6	10,20	1KHz,1V	0.009	3500
HPKW1223-6R8□	6.8	10,20	1KHz,1V	0.011	3300
HPKW1223-8R2□	8.2	10,20	1KHz,1V	0.013	2900
HPKW1223-100□	10	10,20	1KHz,1V	0.017	2700
HPKW1223-120□	12	10,20	1KHz,1V	0.019	2400
HPKW1223-150□	15	10,20	1KHz,1V	0.022	2100
HPKW1223-180□	18	10,20	1KHz,1V	0.023	1900
HPKW1223-220□	22	10,20	1KHz,1V	0.026	1700
HPKW1223-270□	27	10,20	1KHz,1V	0.027	1500
HPKW1223-330□	33	10,20	1KHz,1V	0.032	1400
HPKW1223-390□	39	10,20	1KHz,1V	0.033	1300
HPKW1223-470□	47	10,20	1KHz,1V	0.035	1200
HPKW1223-560□	56	10,20	1KHz,1V	0.037	1100
HPKW1223-680□	68	10,20	1KHz,1V	0.047	1400
HPKW1223-820□	82	10,20	1KHz,1V	0.060	1300
HPKW1223-101□	100	10,20	1KHz,1V	0.080	1200
HPKW1223-121□	120	10,20	1KHz,1V	0.090	1100
HPKW1223-151□	150	10,20	1KHz,1V	0.120	940
HPKW1223-181□	180	10,20	1KHz,1V	0.140	900
HPKW1223-221□	220	10,20	1KHz,1V	0.160	800
HPKW1223-271□	270	10,20	1KHz,1V	0.180	770
HPKW1223-331□	330	10,20	1KHz,1V	0.212	620
HPKW1223-391□	390	10,20	1KHz,1V	0.260	600
HPKW1223-471□	470	10,20	1KHz,1V	0.281	510
HPKW1223-561□	560	10,20	1KHz,1V	0.380	480
HPKW1223-681□	680	10,20	1KHz,1V	0.500	470
HPKW1223-821□	820	10,20	1KHz,1V	0.548	430
HPKW1223-102□	1000	10,20	1KHz,1V	0.655	380
HPKW1223-122□	1200	10,20	1KHz,1V	0.884	350
HPKW1223-152□	1500	10,20	1KHz,1V	1.040	310
HPKW1223-182□	1800	10,20	1KHz,1V	1.180	290
HPKW1223-222□	2200	10,20	1KHz,1V	1.568	250
HPKW1223-272□	2700	10,20	1KHz,1V	2.060	220
HPKW1223-332□	3300	10,20	1KHz,1V	2.530	210

Note: When ordering, please specify tolerance code. Tolerance: K=±10% M=±20%

- Operating temperature range $-40^{\circ}\text{C} \sim 125^{\circ}\text{C}$ (Including self - temperature rise)
- Isat for Inductance drop 10% from its value without current.
- "-N" FOR COMPLETELY LEAD FREE TYPE (INCLUDING FERRITE BODY & SOLDER)

Please be sure to request approval specifications that provide further details of the products. Kindly note that the content of these specifications are subject to change or may be discontinued without advance notice. Please contact our sales department before ordering.



Lead Power Inductor - HPKW1223 Series

HPKW1223 series Electrical Characteristics

Part No.	Inductance (μ H)	Tolerance (\pm %)	Test Freq. (KHz)	RDC (Ω)Max	Isat (mA) Max
HPKW1223-392□	3900	10,20	1KHz,1V	2.750	200
HPKW1223-472□	4700	10,20	1KHz,1V	3.190	170
HPKW1223-562□	5600	10,20	1KHz,1V	3.920	150
HPKW1223-682□	6800	10,20	1KHz,1V	6.690	140
HPKW1223-822□	8200	10,20	1KHz,1V	6.320	130
HPKW1223-103□	10000	10,20	1KHz,1V	7.300	110
HPKW1223-123□	12000	10,20	1KHz,1V	9.210	100
HPKW1223-153□	15000	10,20	1KHz,1V	10.500	95
HPKW1223-183□	18000	10,20	1KHz,1V	14.800	90
HPKW1223-223□	22000	10,20	1KHz,1V	21.800	80
HPKW1223-273□	27000	10,20	1KHz,1V	22.700	70
HPKW1223-333□	33000	10,20	1KHz,1V	25.700	60
HPKW1223-393□	39000	10,20	1KHz,1V	33.000	60
HPKW1223-473□	47000	10,20	1KHz,1V	36.100	60
HPKW1223-563□	56000	10,20	1KHz,1V	40.900	55
HPKW1223-683□	68000	10,20	1KHz,1V	57.300	45
HPKW1223-823□	82000	10,20	1KHz,1V	79.300	40
HPKW1223-104□	100000	10,20	1KHz,1V	89.700	40

Note: When ordering, please specify tolerance code. Tolerance: K= \pm 10% M= \pm 20%

- Operating temperature range $-40^{\circ}\text{C} \sim 125^{\circ}\text{C}$ (Including self - temperature rise)
- Isat for Inductance drop 10% from its value without current.
- "-N" FOR COMPLETELY LEAD FREE TYPE (INCLUDING FERRITE BODY & SOLDER)