



## Leaded Power Inductor - HTDM Series-CA

### FEATURES

- \* Low cost
- \* Wide range of inductance
- \* High reliability

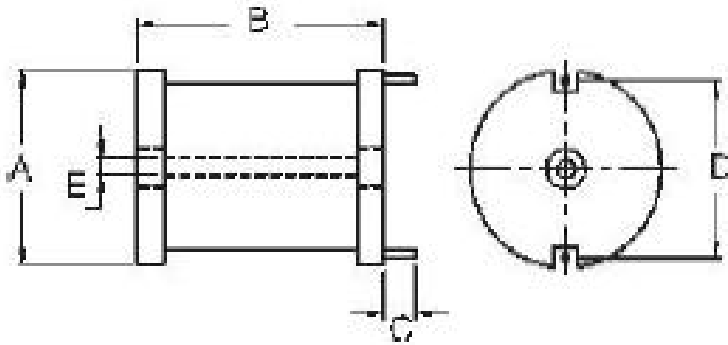


### ORDERING CODE(标志示例)

**HTDM**    □□□    -    □□□    □    -    **CA**  
(1)            (2)                            (3)                            (4)                            (5)

- (1) HTDM 向华料号 Part Number
- (2) 尺寸 Dimensions
- (3) 电感量 Inductance
- (4) 电感量公差 Inductance Tolerance
- (5) 尾码 Tail code

### Shape and Dimensions



Dimensions in mm

TYPE	A	B	C	D	E
HTDM1420-CA	17.0 <sup>+0</sup>	22.0 <sup>+0</sup>	15±2.0	12.0	3.0
HTDM1920-CA	22.0 <sup>+0</sup>	22.0 <sup>+0</sup>	15±2.0	15.0	4.0
HTDM2420-CA	28.0 <sup>+0</sup>	22.0 <sup>+0</sup>	15±2.0	22.0	4.0



## Lead Power Inductor - HTDM1420 Series-CA

### HTDM1420 series Electrical Characteristics

Part No.	Inductance (uH)	Tolerance (±%)	Test Freq. (KHz)	RDC (Ω)Max	Isat (A) Max
HTDM1420-1R0□-CA	1.0	10,20	1KHz,1V	0.003	9
HTDM1420-1R2□-CA	1.2	10,20	1KHz,1V	0.003	9
HTDM1420-1R5□-CA	1.5	10,20	1KHz,1V	0.004	9
HTDM1420-1R8□-CA	1.8	10,20	1KHz,1V	0.004	9
HTDM1420-2R2□-CA	2.2	10,20	1KHz,1V	0.005	9
HTDM1420-2R7□-CA	2.7	10,20	1KHz,1V	0.005	9
HTDM1420-3R3□-CA	3.3	10,20	1KHz,1V	0.005	9
HTDM1420-3R9□-CA	3.9	10,20	1KHz,1V	0.006	9
HTDM1420-4R7□-CA	4.7	10,20	1KHz,1V	0.007	9
HTDM1420-5R6□-CA	5.6	10,20	1KHz,1V	0.007	9
HTDM1420-6R8□-CA	6.8	10,20	1KHz,1V	0.008	9
HTDM1420-8R2□-CA	8.2	10,20	1KHz,1V	0.009	9
HTDM1420-100□-CA	10	10,20	1KHz,1V	0.010	9
HTDM1420-120□-CA	12	10,20	1KHz,1V	0.011	9
HTDM1420-150□-CA	15	10,20	1KHz,1V	0.015	7.2
HTDM1420-180□-CA	18	10,20	1KHz,1V	0.016	7.2
HTDM1420-220□-CA	22	10,20	1KHz,1V	0.025	5.5
HTDM1420-270□-CA	27	10,20	1KHz,1V	0.030	4.5
HTDM1420-330□-CA	33	10,20	1KHz,1V	0.040	4
HTDM1420-390□-CA	39	10,20	1KHz,1V	0.046	4
HTDM1420-470□-CA	47	10,20	1KHz,1V	0.062	2.8
HTDM1420-560□-CA	56	10,20	1KHz,1V	0.069	2.8
HTDM1420-680□-CA	68	10,20	1KHz,1V	0.077	2.8
HTDM1420-820□-CA	82	10,20	1KHz,1V	0.083	2.8
HTDM1420-101□-CA	100	10,20	1KHz,1V	0.095	2.8
HTDM1420-121□-CA	120	10,20	1KHz,1V	0.127	2
HTDM1420-151□-CA	150	10,20	1KHz,1V	0.181	1.6
HTDM1420-181□-CA	180	10,20	1KHz,1V	0.217	1.6
HTDM1420-221□-CA	220	10,20	1KHz,1V	0.240	1.6
HTDM1420-271□-CA	270	10,20	1KHz,1V	0.300	1.6
HTDM1420-331□-CA	330	10,20	1KHz,1V	0.336	1.3
HTDM1420-391□-CA	390	10,20	1KHz,1V	0.460	1
HTDM1420-471□-CA	470	10,20	1KHz,1V	0.636	0.8
HTDM1420-561□-CA	560	10,20	1KHz,1V	0.696	0.8

**Note: When ordering, please specify tolerance code. Tolerance: K=±10% M=±20%**

- Operating temperature range -40℃~125℃ (Including self - temperature rise)
- Isat for Inductance drop 10% from its value without current.
- "-N" FOR COMPLETELY LEAD FREE TYPE(INCLUDING FERRITE BODY & SOLDER)

Please be sure to request approval specifications that provide further details of the products. Kindly note that the content of these specifications are subject to change or may be discontinued without advance notice. Please contact our sales department before ordering.



## Lead Power Inductor - HTDM1920 Series-CA

### HTDM1920 series Electrical Characteristics

Part No.	Inductance ( $\mu$ H)	Tolerance ( $\pm$ %)	Test Freq. (KHz)	RDC ( $\Omega$ )Max	Isat (A) Max
HTDM1920-1R0 $\square$ -CA	1.0	10,20	1KHz,1V	0.003	11.4
HTDM1920-1R2 $\square$ -CA	1.2	10,20	1KHz,1V	0.003	11.4
HTDM1920-1R5 $\square$ -CA	1.5	10,20	1KHz,1V	0.003	11.4
HTDM1920-1R8 $\square$ -CA	1.8	10,20	1KHz,1V	0.003	11.4
HTDM1920-2R2 $\square$ -CA	2.2	10,20	1KHz,1V	0.004	11.4
HTDM1920-2R7 $\square$ -CA	2.7	10,20	1KHz,1V	0.005	11.4
HTDM1920-3R3 $\square$ -CA	3.3	10,20	1KHz,1V	0.005	11.4
HTDM1920-3R9 $\square$ -CA	3.9	10,20	1KHz,1V	0.005	11.4
HTDM1920-4R7 $\square$ -CA	4.7	10,20	1KHz,1V	0.005	11.4
HTDM1920-5R6 $\square$ -CA	5.6	10,20	1KHz,1V	0.006	11.4
HTDM1920-6R8 $\square$ -CA	6.8	10,20	1KHz,1V	0.007	11.4
HTDM1920-8R2 $\square$ -CA	8.2	10,20	1KHz,1V	0.007	11.4
HTDM1920-100 $\square$ -CA	10	10,20	1KHz,1V	0.009	11.4
HTDM1920-120 $\square$ -CA	12	10,20	1KHz,1V	0.009	11.4
HTDM1920-150 $\square$ -CA	15	10,20	1KHz,1V	0.013	9
HTDM1920-180 $\square$ -CA	18	10,20	1KHz,1V	0.018	7.2
HTDM1920-220 $\square$ -CA	22	10,20	1KHz,1V	0.019	7.2
HTDM1920-270 $\square$ -CA	27	10,20	1KHz,1V	0.025	5.5
HTDM1920-330 $\square$ -CA	33	10,20	1KHz,1V	0.029	5.5
HTDM1920-390 $\square$ -CA	39	10,20	1KHz,1V	0.030	5.5
HTDM1920-470 $\square$ -CA	47	10,20	1KHz,1V	0.035	5.5
HTDM1920-560 $\square$ -CA	56	10,20	1KHz,1V	0.039	5.5
HTDM1920-680 $\square$ -CA	68	10,20	1KHz,1V	0.053	4.8
HTDM1920-820 $\square$ -CA	82	10,20	1KHz,1V	0.060	4
HTDM1920-101 $\square$ -CA	100	10,20	1KHz,1V	0.080	4
HTDM1920-121 $\square$ -CA	120	10,20	1KHz,1V	0.090	4
HTDM1920-151 $\square$ -CA	150	10,20	1KHz,1V	0.098	4
HTDM1920-181 $\square$ -CA	180	10,20	1KHz,1V	0.110	2.8
HTDM1920-221 $\square$ -CA	220	10,20	1KHz,1V	0.150	2
HTDM1920-271 $\square$ -CA	270	10,20	1KHz,1V	0.213	1.6
HTDM1920-331 $\square$ -CA	330	10,20	1KHz,1V	0.305	1.6
HTDM1920-391 $\square$ -CA	390	10,20	1KHz,1V	0.320	1.6
HTDM1920-471 $\square$ -CA	470	10,20	1KHz,1V	0.355	1.6
HTDM1920-561 $\square$ -CA	560	10,20	1KHz,1V	0.388	1.6

**Note: When ordering, please specify tolerance code. Tolerance: K= $\pm$ 10% M= $\pm$ 20%**

- Operating temperature range  $-40^{\circ}\text{C} \sim 125^{\circ}\text{C}$  (Including self - temperature rise)
- Isat for Inductance drop 10% from its value without current.
- "-N" FOR COMPLETELY LEAD FREE TYPE (INCLUDING FERRITE BODY & SOLDER)

Please be sure to request approval specifications that provide further details of the products. Kindly note that the content of these specifications are subject to change or may be discontinued without advance notice. Please contact our sales department before ordering.



## Lead Power Inductor - HTDM1920 Series-CA

### HTDM1920 series Electrical Characteristics

Part No.	Inductance ( $\mu$ H)	Tolerance ( $\pm$ %)	Test Freq. (KHz)	RDC ( $\Omega$ )Max	Isat (A) Max
HTDM1920-681□-CA	680	10,20	1KHz,1V	0.430	1.6
HTDM1920-821□-CA	820	10,20	1KHz,1V	0.590	1.3
HTDM1920-102□-CA	1000	10,20	1KHz,1V	0.818	1
HTDM1920-122□-CA	1200	10,20	1KHz,1V	1.140	0.8
HTDM1920-152□-CA	1500	10,20	1KHz,1V	1.260	0.8
HTDM1920-182□-CA	1800	10,20	1KHz,1V	1.390	0.8
HTDM1920-222□-CA	2200	10,20	1KHz,1V	1.540	0.8

**Note: When ordering, please specify tolerance code. Tolerance: K= $\pm$ 10% M= $\pm$ 20%**

- Operating temperature range  $-40^{\circ}\text{C} \sim 125^{\circ}\text{C}$  (Including self - temperature rise)
- Isat for Inductance drop 10% from its value without current.
- "-N" FOR COMPLETELY LEAD FREE TYPE(INCLUDING FERRITE BODY & SOLDER)



## Lead Power Inductor - HTDM2420 Series-CA

### HTDM2420 series Electrical Characteristics

Part No.	Inductance (uH)	Tolerance (±%)	Test Freq. (KHz)	RDC (Ω)Max	Isat (A) Max
HTDM2420-1R0□-CA	1.0	10,20	1KHz,1V	0.003	21
HTDM2420-1R2□-CA	1.2	10,20	1KHz,1V	0.003	21
HTDM2420-1R5□-CA	1.5	10,20	1KHz,1V	0.003	21
HTDM2420-1R8□-CA	1.8	10,20	1KHz,1V	0.003	21
HTDM2420-2R2□-CA	2.2	10,20	1KHz,1V	0.003	21
HTDM2420-2R7□-CA	2.7	10,20	1KHz,1V	0.003	21
HTDM2420-3R3□-CA	3.3	10,20	1KHz,1V	0.003	21
HTDM2420-3R9□-CA	3.9	10,20	1KHz,1V	0.003	21
HTDM2420-4R7□-CA	4.7	10,20	1KHz,1V	0.003	21
HTDM2420-5R6□-CA	5.6	10,20	1KHz,1V	0.003	21
HTDM2420-6R8□-CA	6.8	10,20	1KHz,1V	0.004	21
HTDM2420-8R2□-CA	8.2	10,20	1KHz,1V	0.004	21
HTDM2420-100□-CA	10	10,20	1KHz,1V	0.006	17
HTDM2420-120□-CA	12	10,20	1KHz,1V	0.008	13.5
HTDM2420-150□-CA	15	10,20	1KHz,1V	0.009	13.5
HTDM2420-180□-CA	18	10,20	1KHz,1V	0.010	13.5
HTDM2420-220□-CA	22	10,20	1KHz,1V	0.011	13.5
HTDM2420-270□-CA	27	10,20	1KHz,1V	0.012	13.5
HTDM2420-330□-CA	33	10,20	1KHz,1V	0.017	13.5
HTDM2420-390□-CA	39	10,20	1KHz,1V	0.022	11.4
HTDM2420-470□-CA	47	10,20	1KHz,1V	0.024	9.0
HTDM2420-560□-CA	56	10,20	1KHz,1V	0.026	9.0
HTDM2420-680□-CA	68	10,20	1KHz,1V	0.029	9.0
HTDM2420-820□-CA	82	10,20	1KHz,1V	0.032	9.0
HTDM2420-101□-CA	100	10,20	1KHz,1V	0.034	9.0
HTDM2420-121□-CA	120	10,20	1KHz,1V	0.046	7.2
HTDM2420-151□-CA	150	10,20	1KHz,1V	0.064	5.5
HTDM2420-181□-CA	180	10,20	1KHz,1V	0.072	5.5
HTDM2420-221□-CA	220	10,20	1KHz,1V	0.080	5.5
HTDM2420-271□-CA	270	10,20	1KHz,1V	0.110	4.5
HTDM2420-331□-CA	330	10,20	1KHz,1V	0.122	4.5
HTDM2420-391□-CA	390	10,20	1KHz,1V	0.169	4.0
HTDM2420-471□-CA	470	10,20	1KHz,1V	0.187	4.0
HTDM2420-561□-CA	560	10,20	1KHz,1V	0.205	4.0

**Note: When ordering, please specify tolerance code. Tolerance: K=±10% M=±20%**

- Operating temperature range -40℃~125℃(Including self - temperature rise)
- Isat for Inductance drop 10% from its value without current.
- "-N" FOR COMPLETELY LEAD FREE TYPE(INCLUDING FERRITE BODY & SOLDER)

Please be sure to request approval specifications that provide further details of the products. Kindly note that the content of these specifications are subject to change or may be discontinued without advance notice. Please contact our sales department before ordering.



## Lead Power Inductor - HTDM2420 Series-CA

### HTDM2420 series Electrical Characteristics

Part No.	Inductance ( $\mu$ H)	Tolerance ( $\pm$ %)	Test Freq. (KHz)	RDC ( $\Omega$ )Max	Isat (A) Max
HTDM2420-681□-CA	680	10,20	1KHz,1V	0.256	2.8
HTDM2420-821□-CA	820	10,20	1KHz,1V	0.288	2.8
HTDM2420-102□-CA	1000	10,20	1KHz,1V	0.426	2.0
HTDM2420-122□-CA	1200	10,20	1KHz,1V	0.462	2.0
HTDM2420-152□-CA	1500	10,20	1KHz,1V	0.518	2.0
HTDM2420-182□-CA	1800	10,20	1KHz,1V	0.705	1.6
HTDM2420-222□-CA	2200	10,20	1KHz,1V	1.020	1.3
HTDM2420-272□-CA	2700	10,20	1KHz,1V	1.140	1.3
HTDM2420-332□-CA	3300	10,20	1KHz,1V	1.270	1.3
HTDM2420-392□-CA	3900	10,20	1KHz,1V	1.670	1.0
HTDM2420-472□-CA	4700	10,20	1KHz,1V	1.860	1.0

**Note: When ordering, please specify tolerance code. Tolerance: K= $\pm$ 10% M= $\pm$ 20%**

- Operating temperature range  $-40^{\circ}\text{C} \sim 125^{\circ}\text{C}$  (Including self - temperature rise)
- Isat for Inductance drop 10% from its value without current.
- "-N" FOR COMPLETELY LEAD FREE TYPE (INCLUDING FERRITE BODY & SOLDER)

Please be sure to request approval specifications that provide further details of the products. Kindly note that the content of these specifications are subject to change or may be discontinued without advance notice. Please contact our sales department before ordering.